

Specification

Model	CC-3607WT-80
Pick up Element	1/3" SONY Super HAD CCD II
Effective Picture Elements (H×V)	NTSC:976(H)×494(V)
Horizontal Resolution	720 TV Line
Minimum Illumination	0.001 Lux/F1.2
S/N Ratio	More than 52dB
Scanning System	2:1 interface
Synchronous System	Internal, Negative sync.
Auto Electronic Shutter	NTSC: 1/60s~1/100,000s
Gama Characteristic	0.45
IR Distance	262 Ft (with 42X4 PCS Infrared LED)
IR Status	Under 10Lux by CDS
IR Power On	CDS AUTO Control
Video Output	1Vpp, 75Ω
Auto Gain Control	Auto
Power/Current	24VAC/12VDC(+/-10%)/1500mA
Lens	6" 22mm Manual Zoom Lens
Dimension (IN)	9.1(W)×7.1(H)×4.6(D)
Weight (lb)	4.63
Storage Temperature	-22°F~140°F RH95% MAX
Operating Temperature	-40°F~122°F RH95% MAX (with heating system)

Packing List

No	Name	Model	Number
1.	Weatherproof IR Color Camera	CC-3607WT-80	1
2.	Wall Mount	CHM-3600	1
3.	User Guide	CC-3607WT-80	1


CREST
 ELECTRONICS INC
 3706 ALLIANCE DRIVE
 GREENSBORO, NC 27407-2016
 888-50-CREST/336-855-6422
 FAX: 336-855-6676
 www.crestelectronics.com

CC-3607WT-80 Color Camera

Weatherproof IR Color Camera w/mount EFFIO A



NOTE: Please read this guide
BEFORE installing


CREST
 ELECTRONICS INC

BRIEF OF PRODUCT

* Sensor (CCD)

SONY 1/3" CCD Sensor.

* Auto Gain Control (AGC)

Built-in auto gain control (AGC) circuit. The color camera can get high definition picture in low Lux condition.

* Scanning Mode

NTSC or PAL mode.

* Water Resistance

IP66.

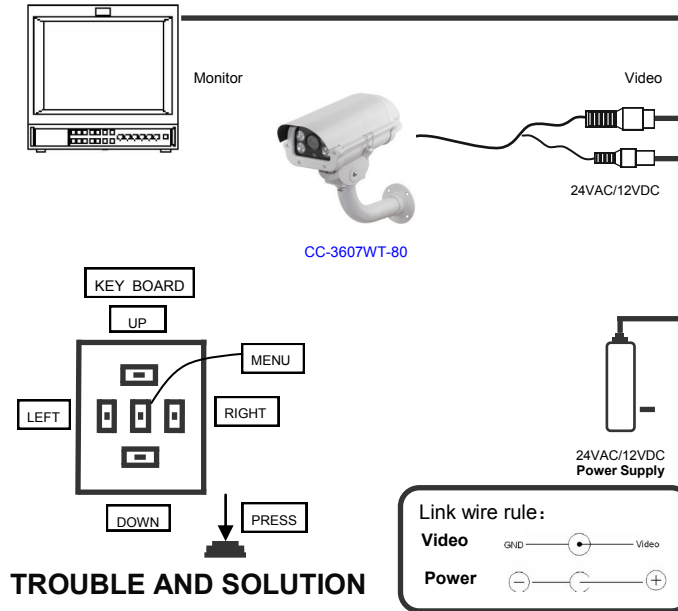
* Support UTC function

With UTC Remote Controller for the convenience of OSD menu setting.

* OSD SETTING

OSD SET	SCENE SELECT	FULL AUTO	SHUTTER/AGC WHITE BAL HLC/BLC ATR-EX DNR DAY/NIGHT IR OPTIMIZER LENS SHD COMP DEFOG FLK LESS ANTI CR
		INDOOR	
		OUTDOOR	
		BACKLIGHT	
		ITS	
		CUSTOM	
	PICT AD- JUST	BRIGHTNESS	
		CONTRAST	
		SHARPNESS	
		HUE	
	EZOOM	COLOR GAIN	
		MAG	0-255
		PAN	
	DIS	TILT	
		ON/OFF	
	PRIVACY MASK	AREA SEL	1-15
		DISPLAY	ON/OFF
		POSITION	
		COLOR	8
		TRANSP	0-1
	MOTION DET	MOAIC	ON/OFF
		DETECT SENSE	
		INTERVAL	
		BLOCK DISP	
		MASK AREA	
	SYSTEM SETTING	MONITOR AREA	
		SYNC MODE	
		LENS	
		FLIP	
		LCD/CRT	
		COMMUNICATION	
	LANGUAGE	CAMERA ID	
		ENGLISH,JAPANESE,CHINESE,RUSSIAN, FRENCH,GERMAN,SPANISH, PORTUGUESE	
	MAINTENANCE	W.PIX MASK	
		CAMERA RESET	

CONNECTING



TROUBLE AND SOLUTION

TROUBLESHOOTING	
NO VIDEO	<ul style="list-style-type: none">◆ <u>Power Supply</u> Check input power connections at the terminal (AC/DC input wires)◆ <u>Voltage Range</u> Measure the voltage at the terminal block. The supply range is: 24VAC or 12VDC.◆ <u>Video Connection</u> Determine if wiring polarity at "Video Connector" is correct. <p>If ok, the problem may be with the interconnections/splices.</p>
ROLLING PICTURE	◆ Check to make sure the coax shield is not touching "ground"
POOR PICTURE	◆ Ensure that the video cable is terminated with 75 ohms at each end.

INTRODUCTION

The Crest Electronics CP-3607WT-80 camera is based on the latest high-resolution 960H sensor and is capable of delivering a resolution of 720TVL. The Wide Dynamic Range of the sensor allows the camera to capture detailed images even in challenging lighting conditions. With built in Smart IR, varifocal lens and OSD menu, this camera can be adjusted to suit a wide variety of needs.

Please read this instruction manual carefully to ensure proper use of the camera.



NOTICE: For best result, please read this instruction booklet prior to installing the CC-3607WT-80 camera.

CAUTION:
RISK OF ELECTRIC. DO NOT OPEN

CAUTION: TO REDUCE THE RISK OF ELECTRIC SHOCK DO NOT REMOVE COVER OR BACK. NO USER SERVICEABLE PARTS INSIDE. REFER SERVICING TO QUALIFIED SERVICE PERSONNEL.

CAUTION: CSA CERTIFIED/UL LISTED CLASS 2 POWER ADAPTORS MUST BE USED IN ORDER TO COMPLY WITH ELECTRICAL SAFETY STANDARDS.

Note:

- Please note the camera's operating temperature is -40°F~140°F. Use of the product outside this range is not recommended.
- This installation should be made by a qualified service person and conform to all local codes. Crest Electronics will not be responsible for damages or injuries as a result of improper installation.