

■ Specification

| | |
|----------------------------------|--|
| Model | CC-7907WS-40 |
| Pick up Element | 1/3" SONY Super HAD CCD II |
| Effective Picture Elements (H×V) | NTSC:976(H)×494(V) |
| Horizontal Resolution | 720 TV Line |
| Minimum Illumination | 0.001 Lux/F1.2 0Lux (with IR LED ON) |
| S/N Ratio | More than 52dB |
| Scanning System | 2:1 interface |
| Synchronous System | Internal, Negative sync. |
| Auto Electronic Shutter | NTSC: 1/60s~1/100,000s |
| Gama Characteristic | 0.45 |
| IR Distance | 131 Feet (with ϕ 5X42 PCS Infrared LED) |
| Video Output | 1Vpp, 75 Ω |
| Auto Gain Control | Auto |
| Power/Current | 24VAC/12VDC(+/-10%)/700mA |
| Lens | 2.8-12mm Manual Zoom Lens |
| Dimension (in) | 11.5(W) x 3.6(H) x 3.7(D) |
| Weight (lb) | 3.43 |
| Storage Temperature | -22°F~140°F RH95% MAX |
| Operating Temperature | 14°~140°F RH95% MAX |

■ Packing List

| No | Name | Model | Number |
|----|--------------------------------------|--------------|--------|
| 1. | Weatherproof IR Color Camera w/mount | CC-7907WS-40 | 1 |
| 2. | User Guide | CC-7907WS-40 | 1 |

CC-7907WS-40 Color Camera

Weatherproof IR Color Camera EFFIO A



NOTE: Please read this guide BEFORE installing

CREST
ELECTRONICS INC
3706 ALLIANCE DRIVE
GREENSBORO, NC 27407-2016
888-50-CREST/336-855-6422
FAX: 336-855-6676
www.crestelectronics.com

CREST
ELECTRONICS INC

BRIEF OF PRODUCT

* Sensor (CCD)

SONY 1/3" CCD Sensor.

* Auto Gain Control (AGC)

Built-in auto gain control (AGC) circuit. The color camera can get high definition picture in low Lux condition.

* Scanning Mode

NTSC or PAL mode.

* Water Resistance

IP66

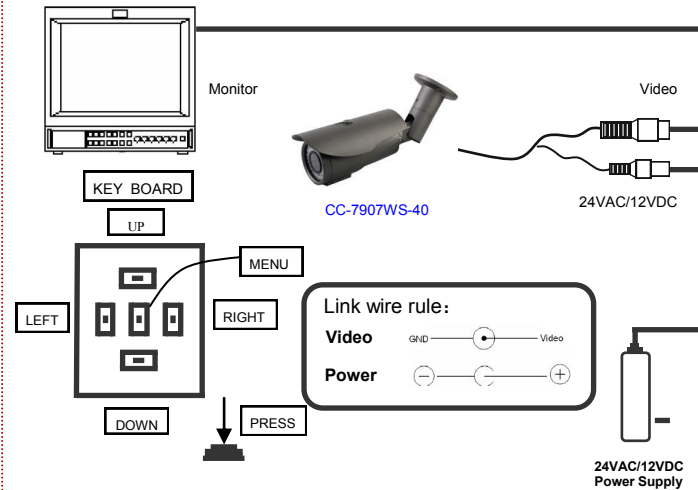
* Support UTC function

With UTC Remote Controller for the convenience of OSD menu setting.

* OSD SETTING

| | | | |
|---------|----------------|--|--|
| OSD SET | SCENE SELECT | FULL AUTO | SHUTTER/AGC WHITE BAL HLC/BLC ATR-EX DNR DAY/NIGHT IR OPTIMIZER LENS SHD COMP DEFOG FLK LESS ANTI CR |
| | | INDOOR | |
| | | OUTDOOR | |
| | | BACKLIGHT | |
| | | ITS | |
| | | CUSTOM | |
| | PICT ADJUST | BRIGHTNESS | |
| | | CONTRAST | |
| | | SHARPNESS | |
| | | HUE | |
| | EZOOM | COLOR GAIN | |
| | | MAG | 0-255 |
| | | PAN | |
| | DIS | TILT | |
| | | ON/OFF | |
| | PRIVACY MASK | AREA SEL | 1-15 |
| | | DISPLAY | ON/OFF |
| | | POSITION | |
| | | COLOR | 8 |
| | | TRANSP | 0-1 |
| | MOTION DET | MOSAIC | ON/OFF |
| | | DETECT SENSE | |
| | | INTERVAL | |
| | | BLOCK DISP | |
| | | MASK AREA | |
| | SYSTEM SETTING | MONITOR AREA | |
| | | SYNC MODE | |
| | | LENS | |
| | | FLIP | |
| | | LCD/CRT | |
| | LANGUAGE | COMMUNICATION | |
| | | CAMERA ID | |
| | MAINTENANCE | ENGLISH, JAPANESE, CHINESE, RUSSIAN, FRENCH, GERMAN, SPANISH, PORTUGUESE | |
| | | W.PIX MASK | |
| | | CAMERA RESET | |

CONNECTING



TROUBLE AND SOLUTION

| TROUBLESHOOTING | |
|-----------------|---|
| NO VIDEO | <p>◆ <u>Power Supply</u> Check input power connections at the terminal (AC/DC input wires)</p> <p>◆ <u>Voltage Range</u> Measure the voltage at the terminal block. The supply range is: 24VAC or 12VDC.</p> <p>◆ <u>Video Connection</u> Determine if wiring polarity at "Video Connector" is correct.</p> <p>If ok, the problem may be with the interconnections/splices.</p> |
| ROLLING PICTURE | <p>◆ Check to make sure the coax shield is not touching "ground"</p> |
| POOR PICTURE | <p>◆ Ensure that the video cable is terminated with 75 ohms at each end.</p> |

INTRODUCTION

The Crest Electronics CC-7907WS-40 camera is based on the latest high-resolution 960H sensor and is capable of delivering a resolution of 720TVL. The Wide Dynamic Range of the sensor allows the camera to capture detailed images even in challenging lighting conditions. With built in Smart IR, varifocal lens and OSD menu, this camera can be adjusted to suit a wide variety of needs.

Please read this instruction manual carefully to ensure proper use of the camera.



NOTICE: For best result, please read this instruction booklet prior to installing the CC-7907WS-40 camera.

CAUTION:
RISK OF ELECTRIC. DO NOT OPEN

CAUTION: TO REDUCE THE RISK OF ELECTRIC SHOCK DO NOT REMOVE COVER OR BACK NO USER SERVICEABLE PARTS INSIDE. REFER SERVICING TO QUALIFIED SERVICE PERSONNEL.

CAUTION: CSA CERTIFIED/UL LISTED CLASS 2 POWER ADAPTORS MUST BE USED IN ORDER TO COMPLY WITH ELECTRICAL SAFETY STANDARDS.

Note:

- Please note the camera's operating temperature is -4°F~140°F. Use of the product outside this range is not recommended.
- This installation should be made by a qualified service person and conform to all local codes. Crest Electronics will not be responsible for damages or injuries as a result of improper installation.