

NETERA™ Pro

USERS MANUAL Ver. 1.0

3rd Generation Network Video Recorder Solution



Revision History

Number	Revision Date	Version Number	Descriptions	Revised by
1				
2				
3				
4				
5				
6				
7				
8				
9				
10				

Before Installation

NETERA Pro Program?

NETERA Pro is NVR (Network Video Recording) solution supporting the 32CH+32CH screen surveillance and the recording for maximum 32 CH, and it supports the perfect compatibility with our IP Cameras, IP Video Server, PC DVR, IP Video Server, Stand Alone DVR.

Product Features

- ☐ Max. 32 Screen Recording in real time
- ☐ Dual monitor support (32 Screen+32 Screen)
- ☐ Create the unlimited recording task of maximum 32CH
- ☐ Support for the scheduled recording
- ☐ Max. 1000 Site Access possible
- ☐ Search function for recorded data
- ☐ Media backup(avi.jpg) for the recorded data
- ☐ Remote Camera PTZ Control Function
- ☐ Remote Environment Setup Function
- ☐ Remote Playback & Backup Function
- ☐ 2WAY audio communication Function
- ☐ Up To 20TB, 40TB Backup Storage Support
- ☐ No Limit for Simultaneous Access by 1:N Access
- ☐ Remote Program Upgrade Function

System Requirements

Operating 480 frame rate with CIF mode for all channels(16CH CIF)

- ☐ CPU : Intel Pentium D 930 or above
- ☐ RAM : 512M or above

Operating 480 frame rate with 4CIF(D1) mode for all channels(16CH 4 CIF)

- ☐ CPU : Intel Core2Duo 2.4G or above
- ☐ RAM : 1G or above

Operating 980 frame rate with 4CIF(D1) mode for all channels(32CH 4 CIF)

- ☐ CPU : Intel Core2Quad 3.0G or above
- ☐ RAM : 1G or above

Common requirements

- ☐ HDD : 100G or above
- ☐ OS : Windows 2000, Windows 2003, Windows XP
- ☐ ODD : CD-RW or DVD-RW
- ☐ VGA: 32MB or above, DirectX8 or above, Support 32bit 1024X768 resolution support (ATI recommended)
- ☐ Network: 10/100 Ethernet NIC

Before Installation

Contents

1. NETERA PRO Start

1. NETERA Pro Program Installation.....	1-1
2. NETERA Pro Shell Screen.....	1-5
3. NETERA Pro Main Screen.....	1-9
4. Releasing the Protection Mode	1-10
5. Site Registration.....	1-11
6. Connecting a Site	1-13

2. Monitoring Function

1. Monitoring Screen	2-1
2. Dual Monitor View.....	2-4
3. PTZ Control Function.....	2-6

3. Search Function

1. Search Screen	3-1
2. Panorama Search Function.....	3-5
3. Media Backup Function.....	3-6

4. Record Function


1. Record Screen	4-1
2. Task Registration.....	4-2

5. Event Function

1. Event Screen.....	5-1
2. Monitoring Task Registration.....	5-2



Part. 1

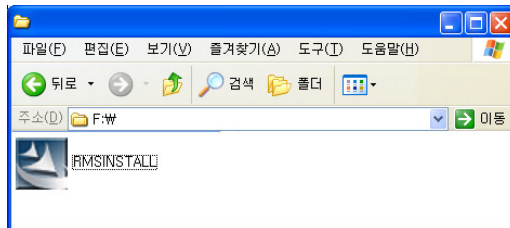


NETERA Pro Start

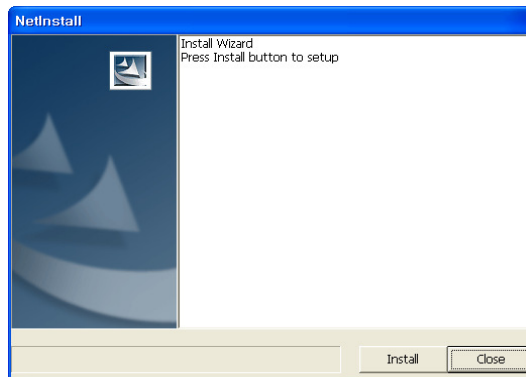
1. NETERA Pro Program Installation
2. NETERA Pro Shell Screen
3. NETERA Pro Main Screen
4. Releasing the Protection Mode
5. Site Registration
6. Connecting a Site

NETERA Pro Program Installation

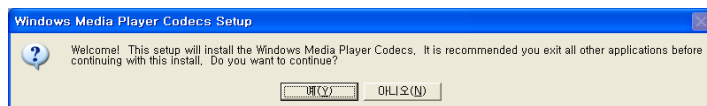
1. Double click **NETINSTALL.EXE** file in NETERA Pro program CD.



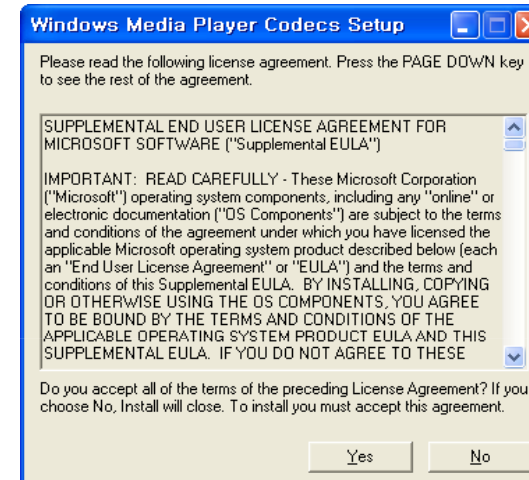
2. Click **[Install]** button.



3. Click **[YES]** button when Codec installation dialog comes in sight.



4. Click **[YES]** button when license agreement dialog appears.



5. Click **[Next]** button when Codec installation preparation dialog appears.



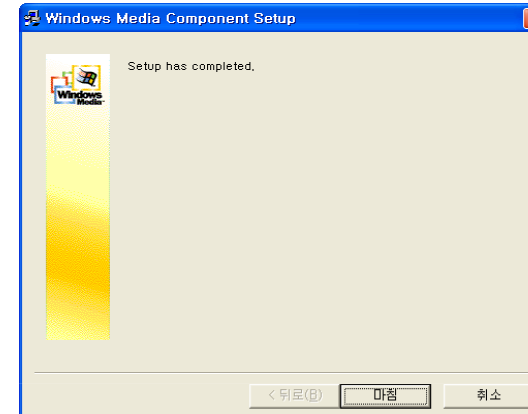
NETERA Pro Start

NETERA Pro: The Network Video Recorder

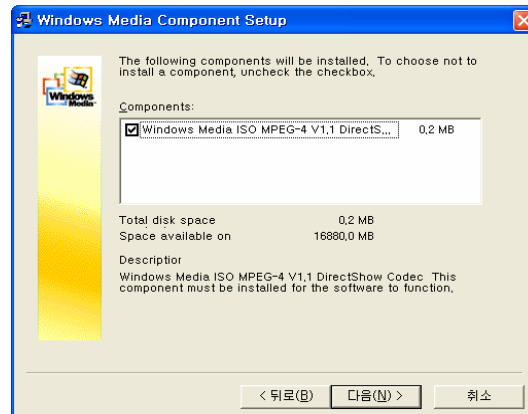
6. Select '**Upgrade**' and click **[Next]** button if the installation option dialog come into view.



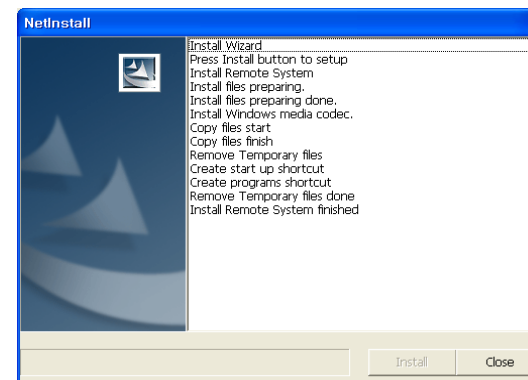
8. Click **[Next]** button when Codec installation completion dialog is shown as follows.



7. Click **[Next]** button when Codec selection dialog is shown as follows.



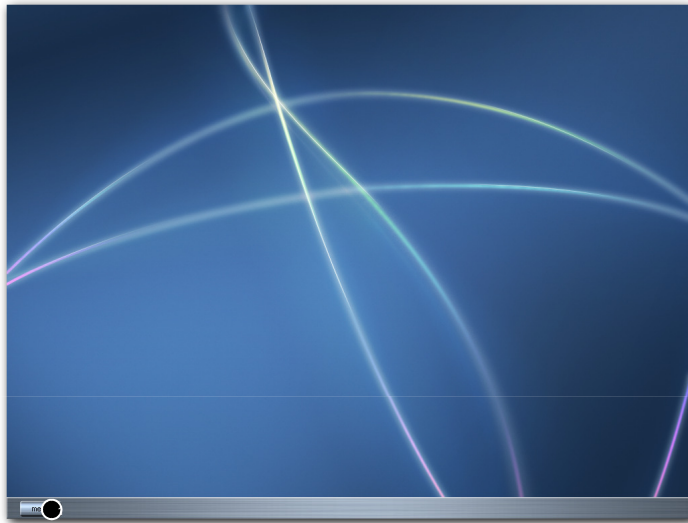
9. Click **[Close]** button when all program installation is completed.



10. Reboot windows.

NETERA Pro Start

NVR-PRO SHELL Screen

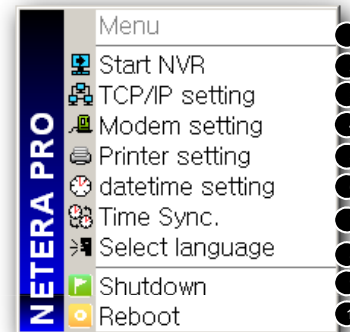


● Menu button in Shell mode.

✓ Shell mode is designed to make your complicated MS Windows environment simple & professional environment. And also it prevent Netera Pro from being interfered by other unwanted programs.



If you click this [Menu] button, following menu will be shown.

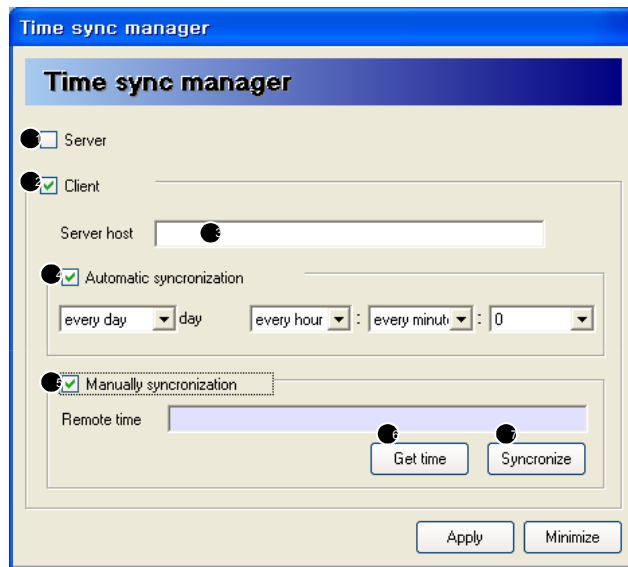


- ① Start NVR Main Program.
- ② TCP/IP Setting for your PC.
- ③ Telephone line modem setting.
- ④ Add Printers.
- ⑤ Configure the settings of Time and date.
- ⑥ Time synchronization settings.
- ⑦ Selecting the Language.
- ⑧ Exit to Windows Desktop
- ⑨ Shut down the System.
- ⑩ Reboot the System.

NETERA Pro Start

How to Setup Time Sync

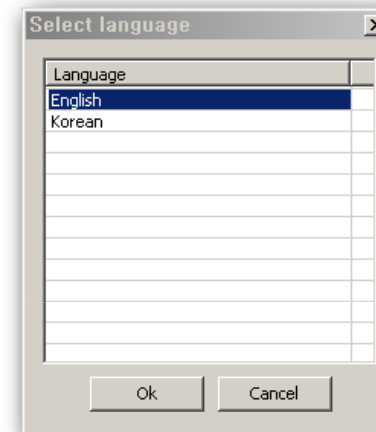
If [Time Sync] is pressed in the menu, Time sync manager will be shown as follows.



- ① **Server** : Check this when you want to make this computer work as Time server.
- ② **Client** : Check this when you want to make this computer work as Time Client.
- ③ **Server host** : Type the domain name or IP Address of Time server.
- ④ **Automatic synchronization** : Set the period of Auto time updating.
- ⑤ **Manually synchronization** : Set Time sync with Time Server manually.
- ⑥ **Get time** : Get time info. from the Time Server .
- ⑦ **Synchronize** : Apply time synchronization using the time acquired by "Get time".

How to Select Language

If [Select language] is chosen in the menu, following dialog will be shown.

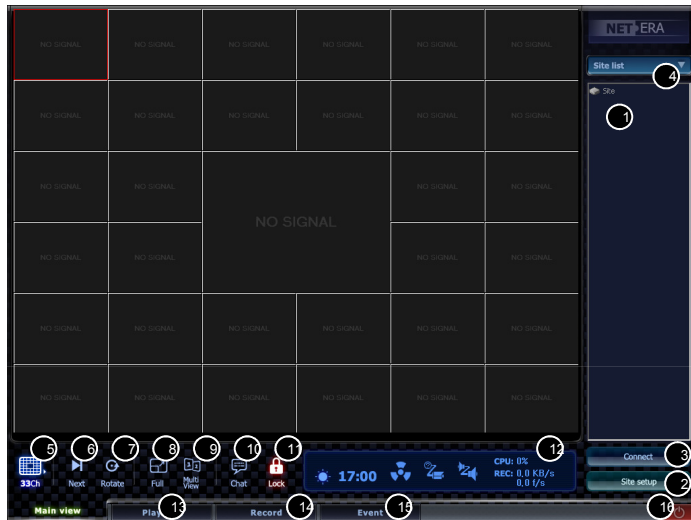


After selecting the language preferred, press [OK] to exit.

NETERA Pro Start

NETERA Pro Main Screen

If you select **[Start NVR]** in the menu of shell mode, you will see following screen.



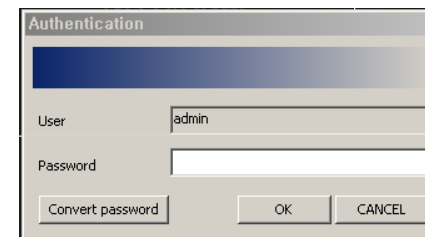
- 1 Registered Site
- 2 Site Registration button.
- 3 For selected site, press this button to connect.
- 4 Switch to PTZ Control screen and back to registered site.
- 5 Selection button for various screen divisions
- 6 Next page button
- 7 Channel rotation button
- 8 Full screen button
- 9 Multi-View button when Dual monitors are used.
- 10 Button for Audio calls with registered site.
- 11 Program access control button
- 12 System status
- 13 Switch to the screen for searching the recorded video.
- 14 Switch to the screen for managing the real-time recording task
- 15 Switch to the screen for event monitoring and management
- 16 Exit the program

Releasing the Protection Mode

If you select **[Start NVR]** in the menu of shell mode, you will see following screen.



To release the protection mode, click the button

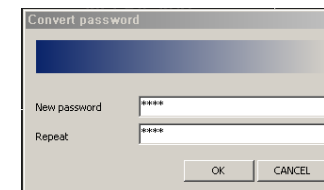


■ Releasing the protection mode

1. Insert password
2. The default password when the program is installed initially is **"admin"**.
3. Click [ok] to release the protection mode.

■ Change the password

1. Insert password.
2. The default password when the program is installed initially is **"admin"**.
3. Click [Convert password] to change the password.



4. Insert the password to use
5. Click [ok] to change the password.

NETERA Pro Start

Site Registration

Site setup Press this button to register IP camera and setup its environments.

The 'Site setup' dialog box includes the following elements:

- Input fields for Site name, IP, Product type (dropdown menu set to CAMERA), User id, and Password.
- Buttons for 'Add' and 'Delete'.
- A 'detail setup' button.
- A table with columns: name, address, mac, connection mode.
- Buttons for 'Add selected site' and 'Search IP camera'.
- A 'Close' button at the bottom right.

- 1) Type the name of the site to register.
- 2) Type the IP address of the site (Domain name can be inserted)
- 3) Select the type of the device to register.
- 4) Type the ID.
- 5) Type the password.
- 6) Can insert the details according to the type of the device
- 7) Register the site.
- 8) Delete the site selected on the list
- 9) Show the registered site.
- 10) Search for the IP cameras within the same network.
- 11) Show the searched IP camera list.
- 12) Register the searched IP camera.

General Registration

- 1) Type site name in ①
- 2) Type IP address in ②
- 3) Select type of Device in ③
- 4) Type ID and Password. **IP CAMERA** in this Example
- 5) Press "Detail Setup" button to setup details.
- 6) You will see the Detail setup dialog shown left hand side..

The 'Detail setup' dialog box includes the following elements:

- Input fields for Web port, Control port, Video port, Audio port, and Mike port.
- Buttons for 'Default' and 'Auto detection' for each port.
- A 'Close' button at the bottom right.

- 7) After typing the **web port** in the dialog, press the "Auto Detection" button, then you can load the other port information.
- 8) Close the dialog.
- 9) Register the site by pressing [Add] button in ⑦.

Registration after searching

Search IP camera

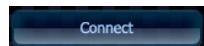
Click this button to search the devices within the network.

Add selected sites

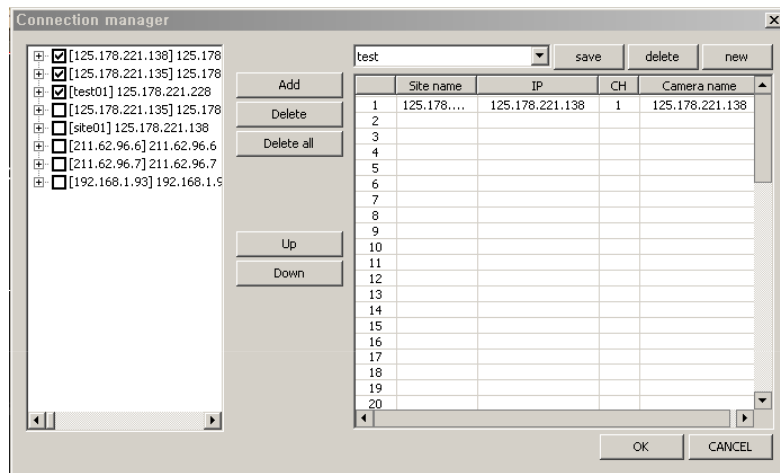
Click this button to register the multiple devices at the same time after selecting the devices which you wish to register.

NETERA Pro Start

Connecting a Site



Select this button to connect to the site.



Registration

1. After pressing [New] button, type Group name.
2. Select a group name in the list
3. Click [Add] to register after checking the site or camera of the site which you wish to register.
4. Click [Save] button to save the group.

How to connect to a site : 1

1. Select the group registered in the Group Combo Box
2. Click [OK] to connect.

How to connect to a site: 2



Drag & Drop connection

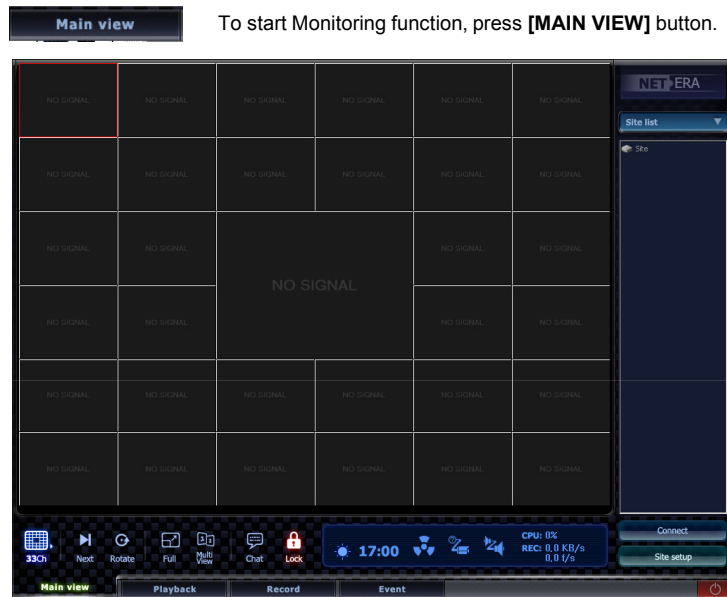
To connect a site or a group, you may drag and drop that to screen.

Monitoring Function

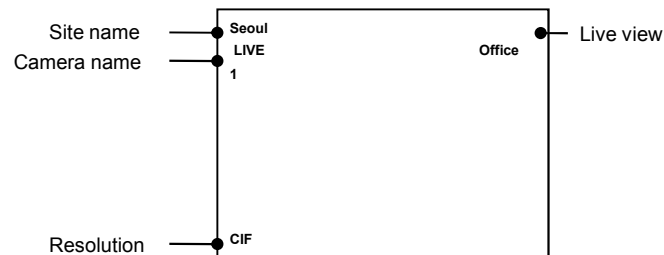
1. Monitoring Screen
2. Dual Monitor Function
3. PTZ Control function

Monitoring Function

Monitoring Screen



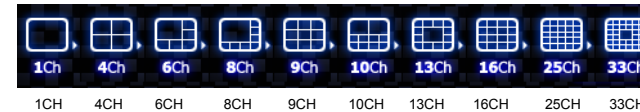
1. Screen Description



2. Screen Division button



: Select desired division of screen.



3. Next Page button

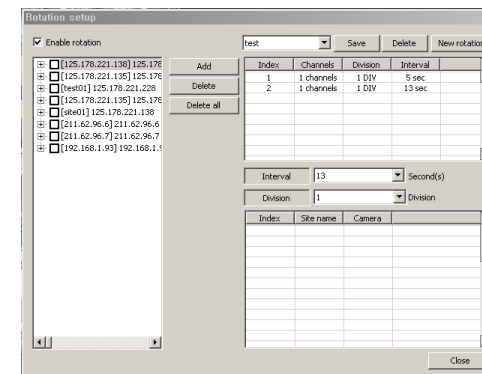


: This shifts screen to the next page of view in the current division screen mode.

4. Rotation button



: This makes the sequential monitoring available with the combination of the registered site.



Rotation registration

1. Press [New rotation] button to register the rotation monitoring.
2. Check [Enable rotation]. When disabled, it will switch to the general mode.
3. Check the site or cameras in the site which you wish to do rotation monitoring.
4. Check [Interval] and [Division].
5. Press [add] to register.
6. Repeat task 3~5 to register the rotation monitoring.
7. Click [save].
8. Click [ok] to proceed with the rotation monitoring.

Monitoring Function

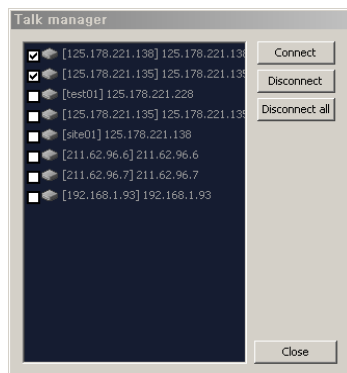
5. Full Screen button



: Switch to the full screen.



6. Audio Calls

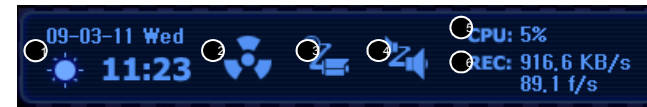


How to do the Audio Calls

1. Check the site which you desire to do the Audio Calls.
2. Try the connection by clicking [Connect] .
3. The icon will show that if it is connected.
4. Connect the Microphone to talk.
5. When disconnecting, check the site, then click [Disconnect] or [Disconnect all].

7. System Status

: It shows the simple system status.



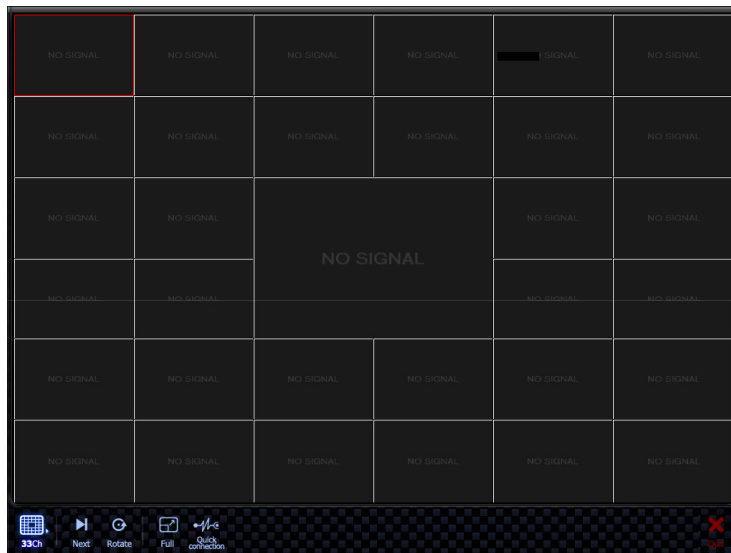
- Show the current time.
- Alert if there is any event detected.
- Show the network connection status.
- Show the status of the audio calls.
- Show the usage of the CPU.
- Show the status of the recording task.

Monitoring Function

Dual Monitor View



To start Dual monitor function, click this button



1. Screen Division Button

: Select desired screen division mode



2. Function Button

▣ **Next page** : Move to the next page in the current screen division mode.



▣ **Rotation** : Switch to the rotation monitoring mode.



▣ **Full** : Change to Full screen mode



▣ **Quick Connection** : Monitor the sites in real-time.



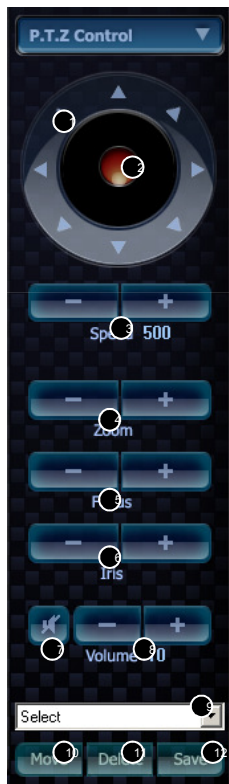
▣ **Quit** : Close the multi view.



Live Monitoring

PTZ Control Function

Site list ▼ Start PTZ Control by pressing this [PTZ] button



- | | |
|---------------------|-----------------------------------------------------------------------------|
| ① Direction control | : Control the direction of the PTZ camera (up, down, left, right, diagonal) |
| ② Jog control | : Jog Control (up, down, left, right, diagonal) |
| ③ Speed | : Adjust Speed(Fast/Slow) |
| ④ Zoom | : Adjust Zoom (In/Out) |
| ⑤ Focus | : Adjust Focus (Far/Near) |
| ⑥ IRIS | : Adjust IRIS (Open/Close) |
| ⑦ Audio | : Control the Audio(Mute) |
| ⑧ Volume | : Control the volume |
| ⑨ Preset | : Select Preset Control |
| ⑩ Preset Move | : Move to Preset Selected |
| ⑪ Set Preset | : Set Current view as Preset number Selected |
| ⑫ Delete Preset | : Delete Preset number Selected |

Monitoring Function

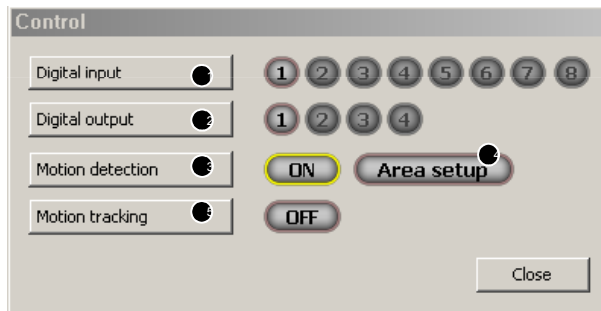
Site Setup/control function



Select the site from the site list, then click the right button of the mouse to perform the site control.

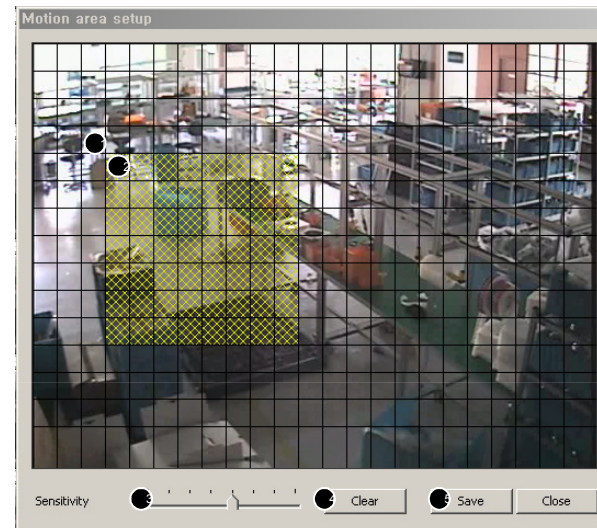
- Setup the site remotely.
- Control the selected site remotely.

Site Control



- Show the status of the Digital in (Sensor).
- Show the status of the Digital out(Relay). When button is clicked, the device will be On/Off
- Show the status of the motion detection mode, and when button is clicked, the mode will be On/Off.
- Setup the motion detection area.
- Show the motion tracking mode. When button is clicked, mode will be On/Off. If the tracking mode is On, Motion detection mode is automatically Off.


Motion area setup



- Show the current screen.
- Show the area of the motion detection. It can be set by dragging the mouse.
- Set the sensitivity of the motion detection.
- Clear the current motion detection area.
- Save the setting of the motion detection area and the sensitivity of the motion detection.



Part 3



Search Function

1. Search Screen
2. Panorama Search Function
3. Media Backup Function

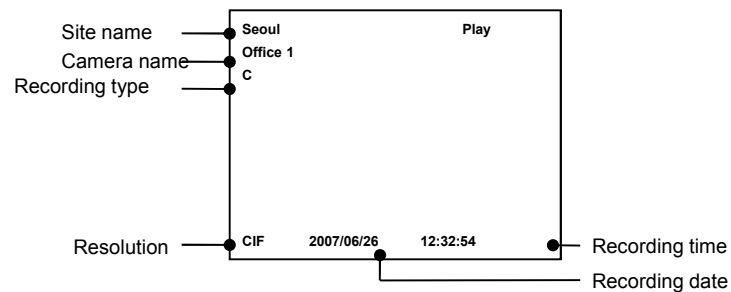
Search Function

Search Screen

Playback Start search function by pressing this button

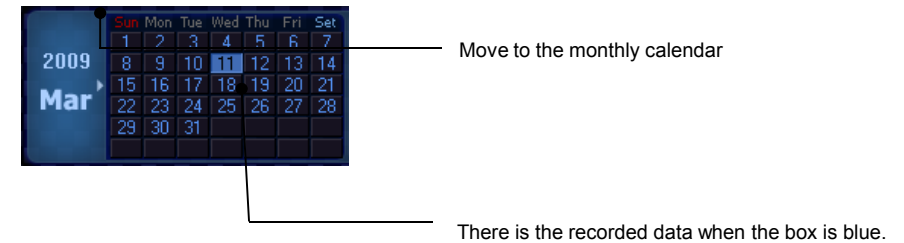


1. Screen Description

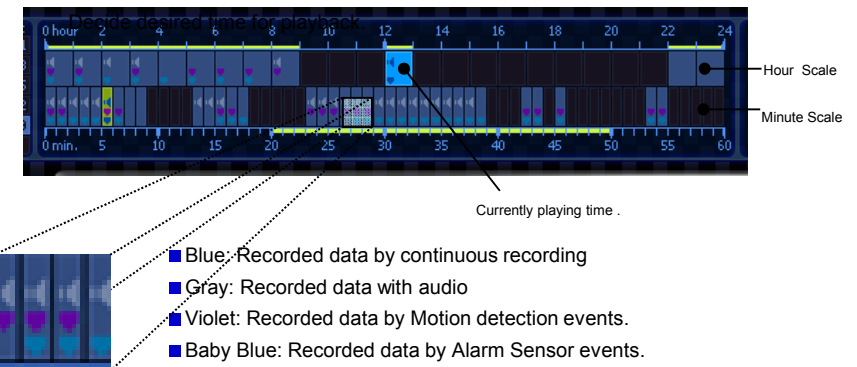


2. DATE Selection

: Select desired date



3. Time Table



- Blue: Recorded data by continuous recording
- Gray: Recorded data with audio
- Violet: Recorded data by Motion detection events.
- Baby Blue: Recorded data by Alarm Sensor events.

Search Function

4. Function buttons



Backward Playback



Stop Playback



Forward Playback



Move backward by 1 Frame



Move forward by 1 Frame



Playback speed control

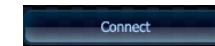


Audio volume control

Searching



1. Select the site from the list.



Click the button to search and connect.

2. Select the date which you want to search from the time table



Play the button to play the video.

Search Function

Panorama Search

Panorama

Start Panorama Search by pressing this button.

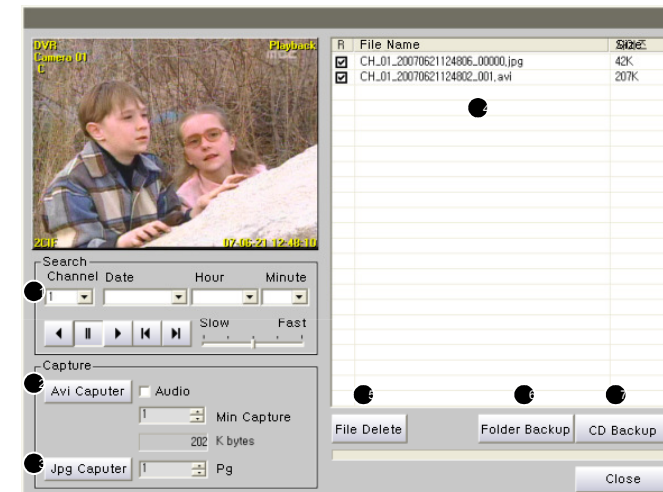


Current channel is playing back in the frame by frame manner.


Media Backup Function

Media Backup

Start backup by pressing this button



- ① **Channel, Date & Time selection:** Select channel, date, time to backup
- ② **AVI Capture :** Backup using AVI format.
- ③ **JPG Capture :** Backup using JPG format.
- ④ **Backup File area :** Temporary file for backup
- ⑤ **File removal :** Remove recorded file
- ⑥ **Folder Backup :** Backup temporary files to specified folder in HDD.
- ⑦ **CD Backup :** Backup temporary files to CD-RW Drive



Part 4



Record Function

1. Record Screen
2. Task Registration

Record Function

Record Screen

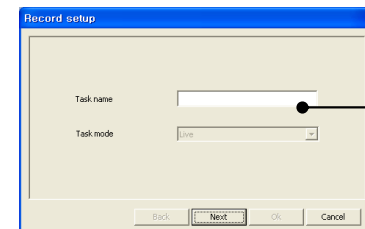
Record Start Record Screen by pressing this [RECORD] button



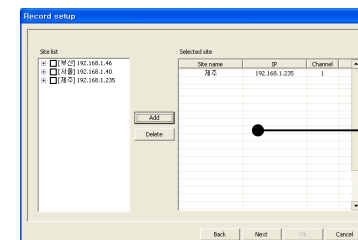
- ① **Task** : Registered Task list
- ② **New Record** : Register New Task
- ③ **Update Record**: Update the Record
- ④ **Delete Record** : Delete the selected Task
- ⑤ **Record Status** : Recording Status of the selected Task

Task Registration

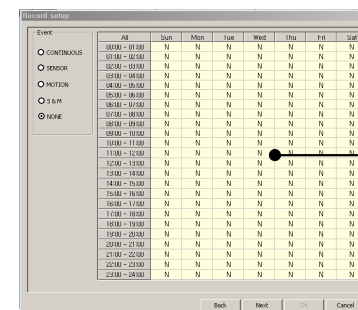
New If you click this button, Task Registration dialog will come into view.



After type your Task name, click [NEXT] button.

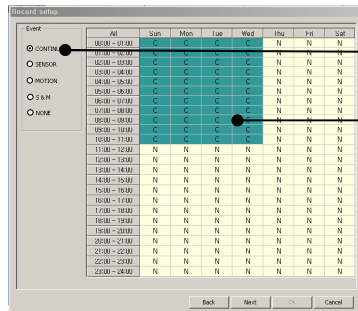


After selecting the sites in the list, press [Add] button to add this to Selected site list. For next step, press [NEXT] button.



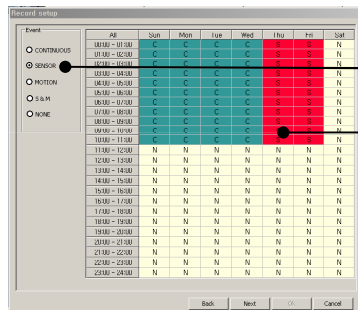
Schedule Setting screen

Record Function



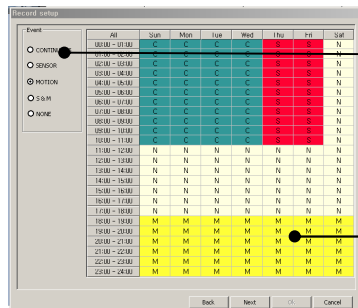
For continuous recording, check **"CONTINUOUS"** in the Event..

By dragging mouse pointer, paint dark **CYAN** color to decide desired time and day for the continuous recording.



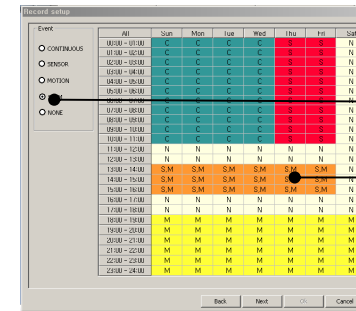
For Alarm Sensor Event Recording, check **"SENSOR"** in the Events.

By dragging mouse pointer, paint RED color on the table to decide desired time and day for the alarm sensor event recording.



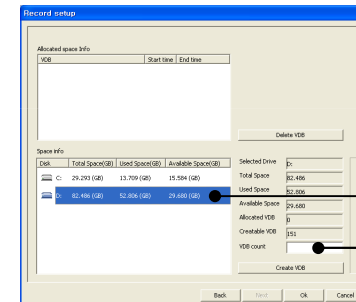
For Motion Detection recording, check **"MOTION"** in the Event..

By dragging mouse pointer, paint **YELLOW** color on the table to decide desired time and day for the Motion Detection Event recording.



If you select **"SENSOR or Motion"**, video will be recorded when there are sensor activation or Motion detected.

By dragging mouse pointer, paint **ORANGE** color on the table to decide desired time band and days for the Sensor or Motion Event recording.



Select disk to record

By considering Creatable VDB Count, decide the VDB count to be created. Then, press **[OK]** button to finish.

Part 5

Event Function

1. Event Screen
2. Monitoring Task Registration

Event Function

Event Screen

Event

Start Event Monitoring by pressing this [EVENT] button

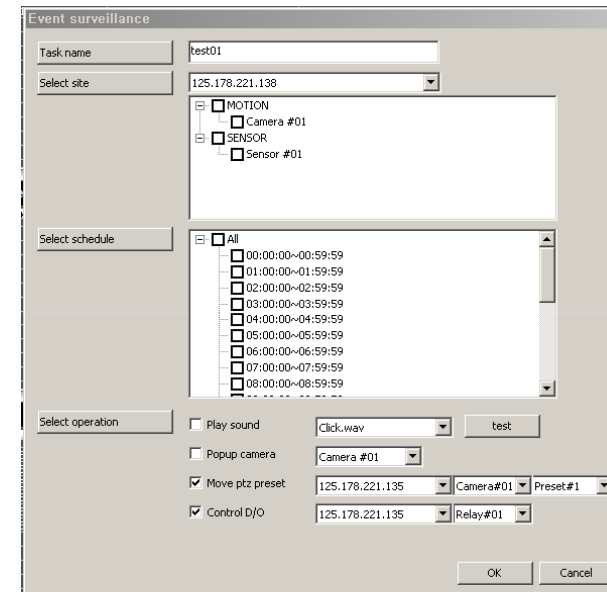


- ① Registered Even Monitoring Task list
- ② Register New Task
- ③ Update the Task
- ④ Delete the selected Task
- ⑤ Status of the Event Monitoring Task
- ⑥ Log of the Event Monitoring Task
- ⑦ List of the all events

Monitoring Task Registration

New

If you click this button, Registration dialog will come into view.



- ① Type the task name in [Task name]
- ② Select the site to monitor in [Select site]
- ③ Check the event to monitor on the selected site
- ④ Check the schedule in [Select schedule] for monitoring
- ⑤ Check the action when the event is triggered in [Select operation]
- ⑥ [Select operation-Play sound] plays the sound when the event is triggered.
- ⑦ [Select operation-Popup camera] pop-ups the camera selected when the event is triggered.
- ⑧ [Select operation-Move ptz preset] moves the selected camera to the preset position when the event is triggered.
- ⑨ [Select operation-Control D/O] triggers the Digital Out.