

Specification

Model	CJ-2607CF
Pick up Element	1/3" SONY Super HAD CCD II
Effective Picture Elements (H×V)	PAL: 976(H)×582(V), NTSC: 976(H)×494(V)
Horizontal Resolution	720 TV Line
Minimum Illumination	0.001 Lux
S/N Ratio	More than 52dB
Scanning System	2:1 interface
Synchronous System	Internal, Negative sync.
Auto Electronic Shutter	NTSC: 1/60s~1/100,000s, PAL: 1/50s~1/100,000s
Gama Characteristic	0.45
Video Output	1Vpp, 75Ω
Auto Gain Control	Auto
UTC	YES
Power/Current	DC12V(+/-10%)/150mA
Lens	Board Lens 3.6mm/F2.0
Dimension (in)	.78 x 2.44(H)in
Weight (oz)	7
Storage Temperature	-4°F~140°F RH95% MAX
Operating Temperature	14°F~122°F RH95% MAX

Packing List

No	Name	Model	Number
1.	Miniature Camera	CJ-2607CF	1
2.	User Guide	CJ-2607CF	1



3706 ALLIANCE DRIVE
GREENSBORO, NC 27407-2016
888-50-CREST/336-855-6422
FAX: 336-855-6676
www.crestelectronics.com

CJ-2607CF Color Camera

Effio-A Camera

Miniature Camera



NOTE: Please read this guide

BEFORE installing



BRIEF OF PRODUCT

* Sensor (CCD)

Adopt 1/3" SONY Super HAD CCD II Sensor.

* Auto Gain Control (AGC)

Built-in auto gain control (AGC) circuit. The color camera can get high definition picture in low Lux condition.

* Scanning Mode

NTSC or PAL mode.

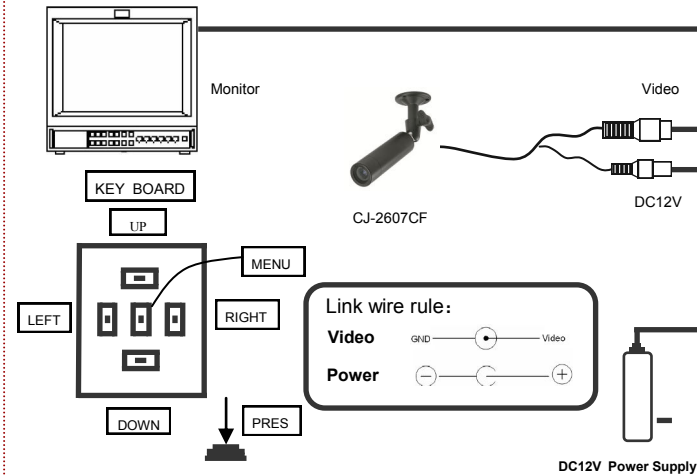
* UTC

Up The Coax

* OSD SETTING

SCENE SELECT	FULL AUTO/ INDOOR/ OUT-DOOR/ BACK-LIGHT/ITS/ CUSTOM	SHUTTER/ AGC	AUTO	AE LEVEL	1-250(100)	
				AGC MAX	6/12/18/24/30/36/42/44.8	
				SENS UP	OFF/AUTO	
			MANUAL	SHUTTER/AGC MAX		
			FIX	SHUTTER/AGC		
		WHITE BAL	ATW	SPEED/DELAY CNT/ATW FRAME/ENVIRONMENT		
				PUSH/PUSH LOCK/USER1 /USER2/MANUAL		
			HLC/BLC	OFF/HLC /BLC		
		ATR-EX	OFF/ON	CONTRAST/ CLEAR FACE	MID/HIGH/LOW	
			DNR	LEVEL	0-6(3)	
				AUTO/DAY/NIGHT		
		IR OPTIMIZER	OFF/ON	MODE/IR AREA/LEVEL/IR LED/COLOR NIGHT/IR SHADE COMP		
		LENS SHD COMP		OFF/ON		
		DEFOG	LEVEL	MID		
		FLK LESS	OFF/AUTO / ON	MODE	SHUTTER FIX/GAIN CNTL	
ANTI CR		AUTO/OFF/ON				
PICT ADJUST	BRIGHTNESS/CONTRAST/SHARPNESS HUE/COLOR GAIN					
E-ZOOM	OFF/ON	MAG/PAN/TILT				
DIS	OFF/ON					
PRIVACY MASK	AREA SEL/DISPLAY/POSITION/COLOR/TRANSP/MOSAIC					
MOTION DET	OFF/ON	DETECT SENSE/INTERVAL/BLOCK DISP/MASK AREA/MONITOR AREA				
SYS SETTING	SYNC MODE	INT				
	LENS	MANUAL				
		AUTO	TYPE/MODE/ADJUST/SPEED			
	FLIP	OFF/V/H/HV				
	LCD/CRT	CRT/LCD				
COMMUNICA-TION	PROTOCOL/ADDRESS/BAUDRATE/DATABIT/PARITY/STOPBIT					
CAMERA ID	OFF/ON					
LANGUAGE	ENGLISH/CHINESS/JAPANESS/ESPANOL/PORTUGUES/ PYCCKNN/FRANCAIS/DEUISCH					
VERSION						
MAINTENANCE	W.PIX MASK	AUTO	LEVEL1/LEVEL2/AUTO			
		MANUAL	REGISTRATION/REG.POINT/CURSOR COLOR/ BLINK/REG.NUMBER			
		DATA CLEAR	YES/NO			
		CAMERA RESET				
EXIT	SAVE/NO SAVE/CANCEL/BACK					

CONNECTING



TROUBLE AND SOLUTION

TROUBLESHOOTING	
NO VIDEO	<ul style="list-style-type: none"> ◆ <u>Power Supply</u> Check input power connections at the terminal (DC input wires) ◆ <u>Voltage Range</u> Measure the voltage at the terminal block. The supply range is: 12VDC. ◆ <u>Video Connection</u> Determine if wiring polarity at "Video Connector" is correct. <p>If ok, the problem may be with the interconnections/splices.</p>
ROLLING PICTURE	<ul style="list-style-type: none"> ◆ Check to make sure the coax shield is not touching "ground"
POOR PICTURE	<ul style="list-style-type: none"> ◆ Ensure that the video cable is terminated with 75 ohms at each end.

INTRODUCTION

The Crest Electronics CJ-2607CF camera is based on the latest high-resolution 960H sensor and is capable of delivering a resolution of 720TVL. The Wide Dynamic Range of the sensor allows the camera to capture detailed images even in challenging lighting conditions. With built in Smart IR, varifocal lens and OSD menu, this camera can be adjusted to suit a wide variety of needs.

Please read this instruction manual carefully to ensure proper use of the camera.



NOTICE: For best result, please read this instruction booklet prior to installing

!	CAUTION: RISK OF ELECTRIC. DO NOT OPEN	!
CAUTION: TO REDUCE THE RISK OF ELECTRIC SHOCK DO NOT REMOVE COVER OR BACK. NO USER SERVICEABLE PARTS INSIDE. REFER SERVICING TO QUALIFIED SERVICE PERSONNEL.		
CAUTION: CSA CERTIFIED/UL LISTED CLASS 2 POWER ADAPTORS MUST BE USED IN ORDER TO COMPLY WITH ELECTRICAL SAFETY STANDARDS.		

!	Note:
<ul style="list-style-type: none"> ● Please note the camera's operating temperature is -4°F~140°F. ● Use of the product outside this range is not recommended. ● This installation should be made by a qualified service person and conform to all local codes. Crest Electronics will not be responsible for damages or injuries as a result of improper installation. ● Do not mount the camera near by the radiator or heater. 	