

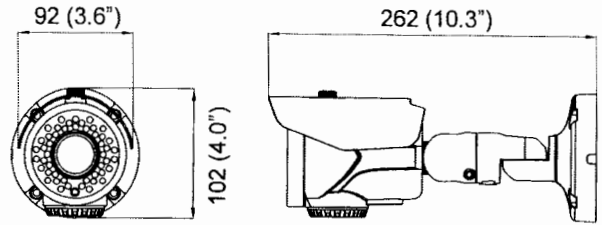
ULTRA HIGH RESOLUTION  
DIGITAL COLOR CCTV CAMERA

Unit: mm (Inch)

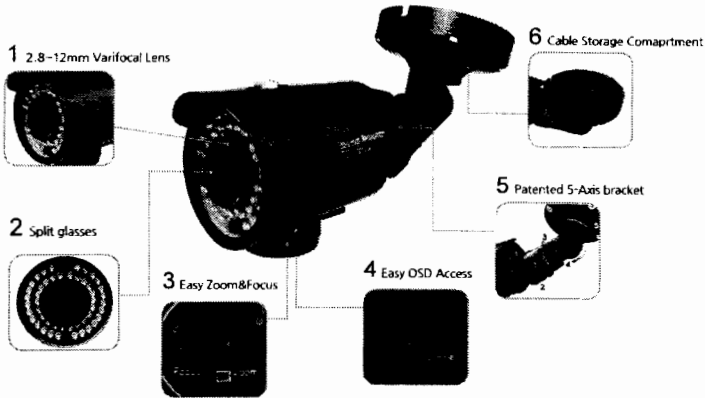
# Owner's Manual

- 1/3" 960H IT CCD
- 2.8~12mm VARIFOCAL LENS  
Optional 6~50mm Lens  
ICR-True Day & Night (Option)
- Cable Storage Compartment
- 5-Axis bracket
- Split glasses

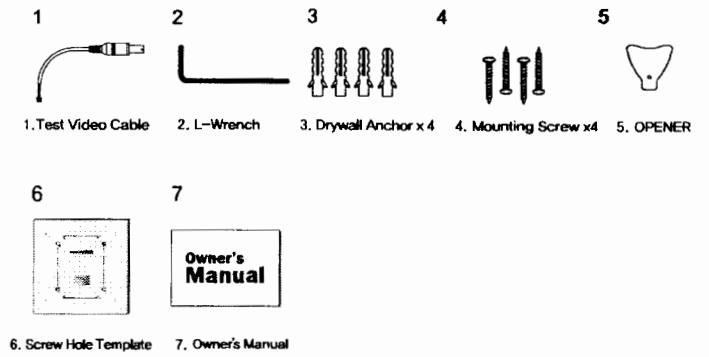
## 1. Dimensions



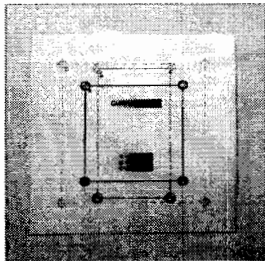
## 2. Features



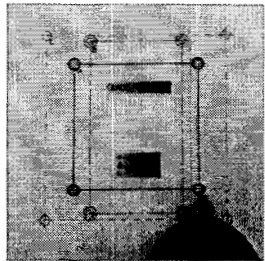
## 3. Contents



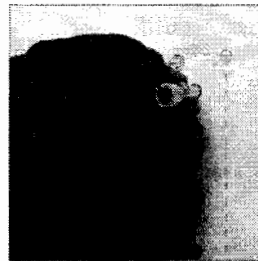
## 4. Installation Guide



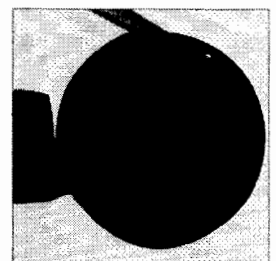
1. Attach included template to the wall



2. Drill 3/16" holes (4X) where indicated "X"

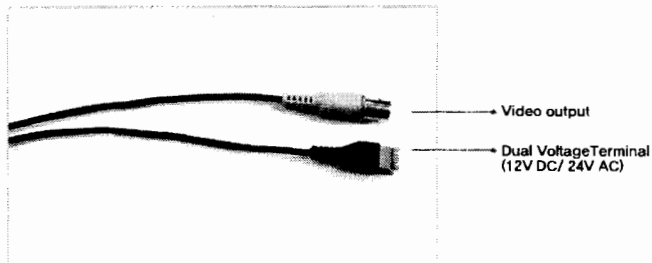


3. Firmly insert included drywall anchors

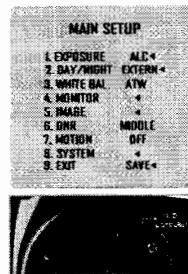


4. Align the bracket holes and tighten all 4 screws

## 5. Cables



## 6. Settings



### Menu Configuration

MAIN SETUP	
EXPOSURE	IBC - ALC
DAY/NIGHT	AUTO/DAY - EXTERN - EOS
WHITE BAL	ATW/PUSH - MANUAL
MONITOR	GAMMA - CONTRAST - SHARPNESS - S-BKING - RED LV
IMAGE	BACKLIT - CONTRAST - POS/NEG - MIRROR - PRIVACY - RETURN
DNR	LOW/MIDDLE/HIGH
MOTION	ON/OFF
SYSTEM	SYSTEM - CAM TITLE - CALIB - E-OSR - SYNC - BUDKATE - LANGUAGE - SPECIAL
EXIT	SAVE/RESTORE/INITIAL/MANUAL

☞ See back for more details.

- Push the SET button > menu open
- Icon 4 has sub menus. Press the set button to enter sub menus.

1. Up and Down : Move Cursor
2. Left and Right : Value
3. Left and Right > Push > Menu > Value
4. END : Push > Return

## 7. Specifications

IMAGE SENSOR	1/3" 900H IT CCD
EFFECTIVE PIXEL	976(H) x 494(V)
SCANNING SYSTEM	2:1 Interface
SYNCHRONIZATION	Internal
HORIZONTAL RESOLUTION	700TV Lines
VIDEO OUTPUT	COMPOSITE (1.0Vp-p/750Ω)
S/N (V Signal)	More Than 50dB
LENS	2.8~12mm VARIOFOCAL LENS (ICR - Option)
ELECTRONIC SHUTTER	1/60 ~ 1/20,000sec
OSD LANGUAGE	ENGLISH / CHINA
BACKLIGHT COMPENSATION	OFF / BLC / HLC
WHITE BALANCE	Auto / Preset / Manual
DAY & NIGHT	Auto / Day / Night / EXT
PRIVACY MASKING	ON/OFF (B zones)
DNR	OFF / LOW / MIDDLE / HIGH
SMART IR	OFF / ON
SENS UP	OFF / x1 ~ x512
MOTION	OFF / ON (4 POINTS)
DEFECT DET	OFF / ON
IR LED	4Rps
INPUT VOLTAGE	DC 12V(±10%) / AC 24V DUAL VOLTAGE (OPTION)
Power Consumption	DC IR OFF : (30mA(±10%) / DC IR ON : 420mA(±10%) AC IR OFF : 120mA(±10%) / AC IR ON : 320mA(±10%)
Operating Temp. / Hum.	-10°C ~ +50°C / MAX 90% RH
Storage Temp. / Hum.	-20°C ~ +60°C / MAX 90% RH

\* This device complies with part 15 of the FCC Rules. Operation is subject to the following two conditions: (1) This device may not cause harmful interference, and (2) this device must accept any interference received, including interference that may cause undesired operation.

## 8. Installation Caution



- Do not install the camera face towards the direct sun light.
- Do not install camera in an environment where the humidity is high.
- Handle with care. Dropping or sudden impact can damage the camera permanently.
- Do not install or use camera in extreme temperature condition.
- Do not touch the glass part of the lenses with your fingers.
- Cutting or altering a video cable will void the warranty.
- Bad grounding or running camera wires too close from power line may cause video (Ground Loop) interference.
- If product arrives damaged or defective, do not attempt to fix. Please contact your local dealer for RMA service.

\* This camera may require professional installation. Please contact your local dealer for more information.

\* Design and specifications are subjected to change without notice.

## 9. OSD Tree

