

## Specification

Model	CP-9507W
Pick up Element	1/3" 960H IT CCD
Effective Picture Elements (H×V)	PAL: 976(H)×582(V), NTSC: 976(H)×494(V)
Horizontal Resolution	700 TV Line
Minimum Illumination	0.0001 Lux in B/W; 0.01 Lux in Color
S/N Ratio	52dB (AGC off)
Scanning System	2:1 interface
Synchronous System	Internal
Auto Electronic Shutter	NTSC: 1/60s~1/100,000s, PAL: 1/50s~1/100,000s
Gamma Characteristic	0.45
Motion	Off / On (4 points)
Video Output	CVBS : 1.0Vp-p, 75Ω composite
Auto Gain Control	Low / Middle / High / Off
White Balance	ATW / PUSH / USER1 / USER2 / ANTI CR / MANUAL / PUSH LOCK
Power/Current	DC 12V : 120mA(MAX) / AC 24V : 110mA(MAX) (+/- 10%)
Lens	C, CS Mount Lens
Dimension (IN)	(L) 4.7 x (W) 2.2 X (H) 2.1
Weight (LBS)	
Storage Temperature	-4°F~140°F RH90% MAX
Operating Temperature	14°F~122°F RH90% MAX

## Packing List

No	Name	Model	Number
1.	WDR Analog Box Camera	CP-9507W	1
2.	User Guide	CP-9507W	1

## CP-9507W Color Camera

1/3" 960H IT CCD

Analog Low Light  
Box Camera



**NOTE:** Please read this guide

**BEFORE** installing



3706

ALLI-

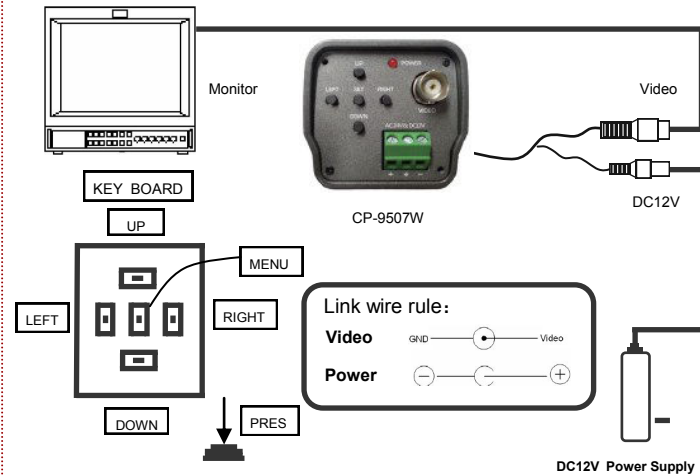
ANCE DRIVE  
GREENSBORO, NC 27407-2016  
888-50-CREST/336-855-6422  
FAX: 336-855-6676

## BRIEF OF PRODUCT

- \* **Sensor (CCD)**  
1/3" 960H IT
- \* **Auto Gain Control (AGC)**  
Built-in auto gain control (AGC) circuit. The color camera can get high definition picture in low Lux condition.
- \* **Scanning Mode**  
NTSC or PAL mode.
- \* **Water Resistance**  
IP66
- \* **UTC**  
Up The Coax
- \* **OSD SETTING**

SCENE SELECT	FULL AUTO/INDOOR/OUT-DOOR/BACK-LIGHT/TITS/CUSTOM	SHUTTER/AGC	AUTO	AE LEVEL	1-250(100)		
				AGC MAX	6/12/18/24/30/36/42/44.8		
				SENS UP	OFF/AUTO		
		MANUAL	SHUTTER/AGC MAX				
			FIX	SHUTTER/AGC			
		WHITE BAL	ATW	SPEED/DELAY CNT/ATW FRAME/ENVIRONMENT			
				PUSH/PUSH LOCK/USER1 /USER2/MANUAL			
		HLC/BLC	OFF/HLC /BLC				
		ATR-EX	OFF/ON	CONTRAST/CLEAR FACE	MID/HIGH/LOW		
					DNR	LEVEL	0-6(3)
		AUTO/DAY/NIGHT					
		IR OPTIMIZER	OFF/ON	MODE/IR AREA/LEVEL/IR LED/COLOR NIGHT/IR SHADE COMP			
		LENS SHD COMP	OFF/ON				
		DEFOG	LEVEL	MID			
		FLK LESS	OFF/AUTO/ON	MODE	SHUTTER FIX/GAIN CNTL		
ANTI CR	AUTO/OFF/ON						
PICT ADJUST	BRIGHTNESS/CONTRAST/SHARPNESS HUE/COLOR GAIN						
E-ZOOM	OFF/ON	MAG/PAN/TILT					
DIS	OFF/ON						
PRIVACY MASK	AREA SEL/DISPLAY/POSITION/COLOR/TRANSP/MOSAIC						
MOTION DET	OFF/ON	DETECT SENSE/INTERVAL/BLOCK DISP/MASK AREA/MONITOR AREA					
SYS SETTING	SYNC MODE	INT					
	LENS	MANUAL					
		AUTO	TYPE/MODE/ADJUST/SPEED				
	FLIP	OFF/V/H/HV					
	LCD/CRT	CRT/LCD					
COMMUNICATION	PROTOCOL/ADDRESS/BAUDRATE/DATABIT/PARITY/STOPBIT						
CAMERA ID	OFF/ON						
LANGUAGE	ENGLISH/CHINESE/JAPANESE/SPANOL/PORTUGUES/FRANCAIS/DEUISCH						
MAINTENANCE	W.PIX MASK	AUTO	LEVEL1/LEVEL2/AUTO				
		MANUAL	REGISTRATION/REG.POINT/CURSOR COLOR/BLINK/REG.NUMBER				
		DATA CLEAR	YES/NO				
	CAMERA RESET						
EXIT	SAVE/NO SAVE/CANCEL/BACK						

## CONNECTING



## TROUBLE AND SOLUTION

TROUBLESHOOTING	
<b>NO VIDEO</b>	<ul style="list-style-type: none"> <li>◆ <u>Power Supply</u> Check input power connections at the terminal (DC input wires)</li> <li>◆ <u>Voltage Range</u> Measure the voltage at the terminal block. The supply range is: 12VDC.</li> <li>◆ <u>Video Connection</u> Determine if wiring polarity at "Video Connector" is correct.</li> </ul> <p>If ok, the problem may be with the interconnections/splices.</p>
<b>ROLLING PICTURE</b>	<ul style="list-style-type: none"> <li>◆ Check to make sure the coax shield is not touching "ground"</li> </ul>
<b>POOR PICTURE</b>	<ul style="list-style-type: none"> <li>◆ Ensure that the video cable is terminated with 75 ohms at each end.</li> </ul>

## INTRODUCTION

The Crest Electronics CP-9507W camera is based on the latest high-resolution 960H sensor and is capable of delivering a resolution of 700TVL. The Wide Dynamic Range of the sensor allows the camera to capture detailed images even in challenging lighting conditions. With built in Smart IR, varifocal lens and OSD menu, this camera can be adjusted to suit a wide variety of needs.

Please read this instruction manual carefully to ensure proper use of the camera.



**NOTICE:** For best result, please read this instruction booklet prior to installing

**CAUTION:**

**RISK OF ELECTRIC. DO NOT OPEN**

**CAUTION: TO REDUCE THE RISK OF ELECTRIC SHOCK DO NOT REMOVE COVER OR BACK. NO USER SERVICEABLE PARTS INSIDE. REFER SERVICING TO QUALIFIED SERVICE PERSONNEL.**

**CAUTION: CSA CERTIFIED/UL LISTED CLASS 2 POWER ADAPTORS MUST BE USED IN ORDER TO COMPLY WITH ELECTRICAL SAFETY STANDARDS.**

**Note:**

- Please note the camera's operating temperature is -4°F~140°F. Use of the product outside this range is not recommended.
- This installation should be made by a qualified service person and conform to all local codes. Crest Electronics will not be responsible for damages or injuries as a result of improper installation.