

1. Central Monitoring System Software



1-1. General information

- CMS program is an application with which users not only watch and control remote DVRs, but also receive video/audio data or alarm signals with LAN, WAN environment.
- CMS enables users who care about security to manage full information from all the wire-connected DVRs. All security administrators can control all situations even in emergency with easy operation in their PC.
- Main features of CMS program is as follows,
 - Real time monitoring multi DVRs at the same time
 - Up to 64 camera display on a screen
 - Various screen mode supported. (1, 4, 9, 16, 25, 36, 49, 64 screen & sequence mode)
 - Remote playback/backup & local playback (backup file view)
 - Remote controlling DVR setting value / PTZ camera control
- System requirements for PC
 - Operating system : Windows XP / Vista / Windows7
 - CPU : Dual core or Higher
 - Ram : At least 1GB (2GB or higher memory recommended)
 - VGA : 128MB graphic memory or More

1-2 Program Installation

1-2-1 Find CMS installing program, and execute it.



1-2-2 After installation, the CMS icon will be created on the desktop.



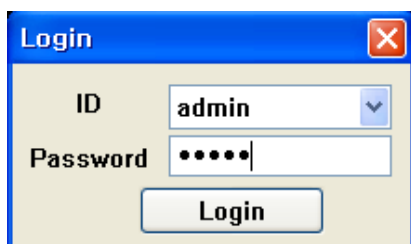
1-3 . Log In

When S/W is executed, Login window will be shown.

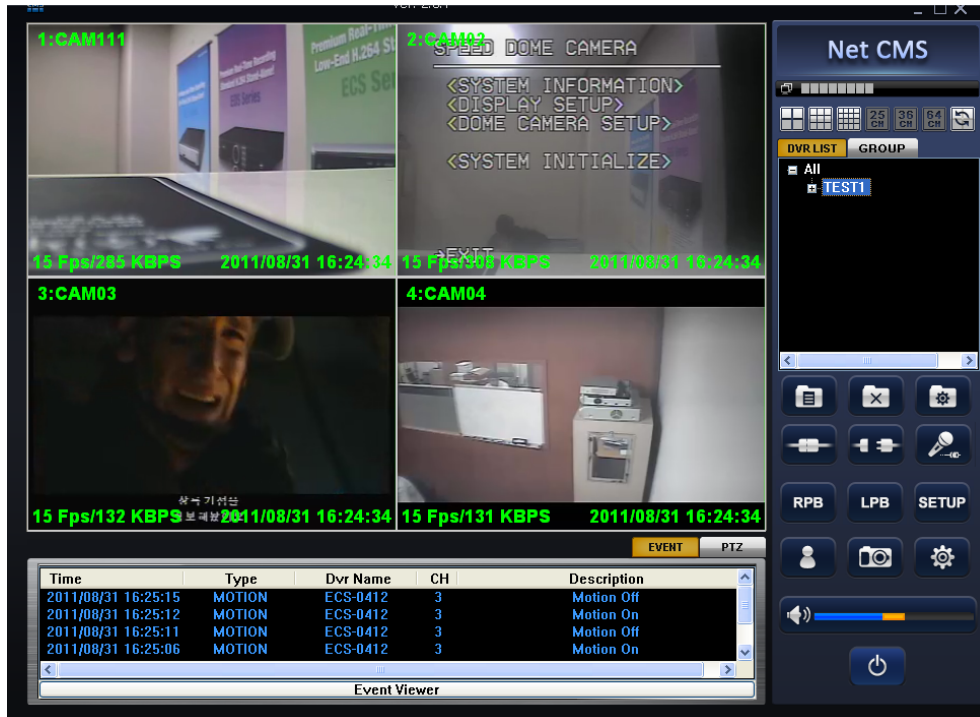
Input your ID and password.

(These ID and password are for entering CMS program and are different from those of DVR's)

* **Default ID : admin , Password : admin.**



1-4. How to use CMS



1-4-1 ICONS in initial screen

1-4-1-1 Screen division option



S/W displays the channel mode automatically according to the number of channels of DVR or group.

Also, you can select the channel mode among 4 / 9 / 16 / 25 / 36 / 64ch or sequence mode.

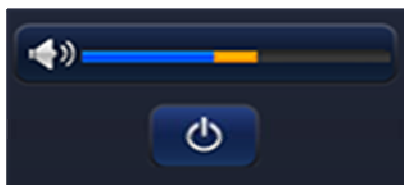
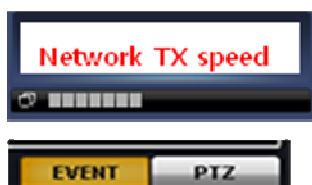
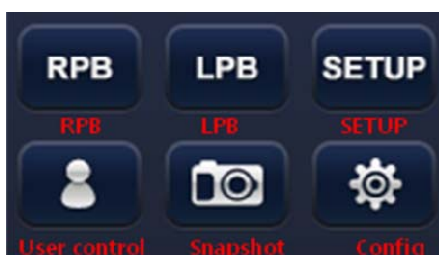
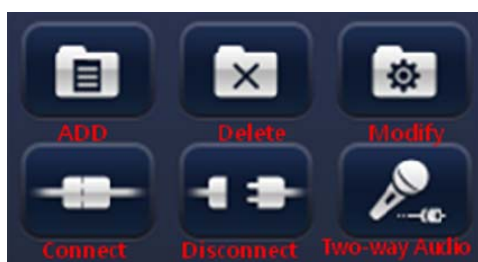
To get into full screen mode, click maximize button



You can see 1ch mode by double click.

1-4-1-2. MAIN ICONS

- 1) ADD : Create Group or DVR site in DVR LIST window / Set prelist info window.
- 2) Delete : Delete created Group or DVR site in DVR LIST window / Delete PRE LIST window.
- 3) Modify : Modify the information of the registered Group or DVR site in DVRLIST window, or cameras in PRELIST window.
- 4) Connect : Connect registered DVR.
- 5) Disconnect : Disconnect the connected DVR.
- 6) Two-way Audio : Two-way audio communication thru CMS. (Between DVR site and PC)
- 7) RPB : Remote Playback Mode (Playback data on remote DVR)
- 8) LPB : Local Playback Mode (Playback backup data in PS format)
- 9) SETUP : Remote setup Mode (set up remote DVR)
- 10) User control : Create or delete new user of CMS.
- 11) Snapshot : Capture the Frame of one channel
- 12) Config : Set up CMS
- 13) Network transmission : Size of transmission data receiving from remote DVR. The faster bar moves, the more size data CMS receives.
- 13) EVENT : shows CMS status and event logs
- 14) PTZ : PTZ camera control on 1ch mode
- 15) Volume : Adjust audio volume
- 16) Power off : Close CMS program





1-4-2 DVR LIST

DVR LIST shows the information of the registered DVR in CMS.

To register DVR in CMS, please follow the below steps;

After you input PW in Login window, you can see operating CMS program.

You can make DVR list to connect and all camera of the DVR will be displayed in the connection.

- 1) Please select ALL  and then click ADD  folder ICON.
- 2) Please input Group name, then the group name will be created as tree of ALL.
- 3) Please select the group name and then click add

folder ICON again, and then the Site window will pop up.

- 4) Please input each value in window.

Site Name : Please input DVR site name.

Address : Please input the same IP address as DVR you set up in DVR

User ID : Please input the same user name in DVR

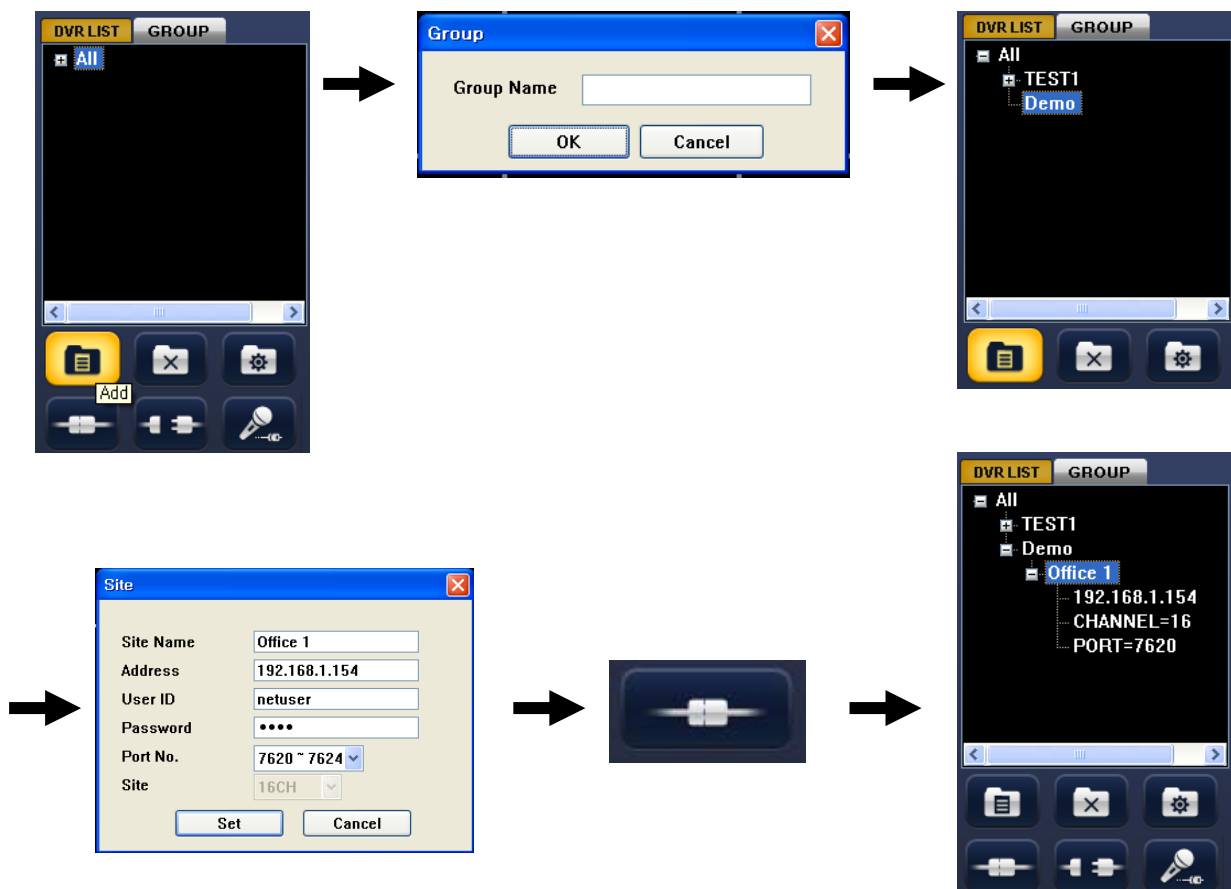
Password : please input the same password as that of DVR

Port Number : please input client port number of DVR

The default value is netuser in User ID, and 0000 in password.

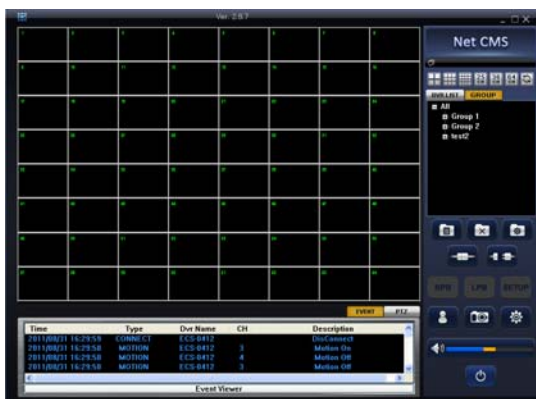
Please click OK ICON, and then the status of DVR you selected will be shown in small window.

- 5) Please click connection ICON, the DVR will be connected.



1-4-3. GROUP

It is the function to make the list to display from more than one DVR.



1-4-3-1. Making display List

To make the list to display from more than one DVR, please make the display list.

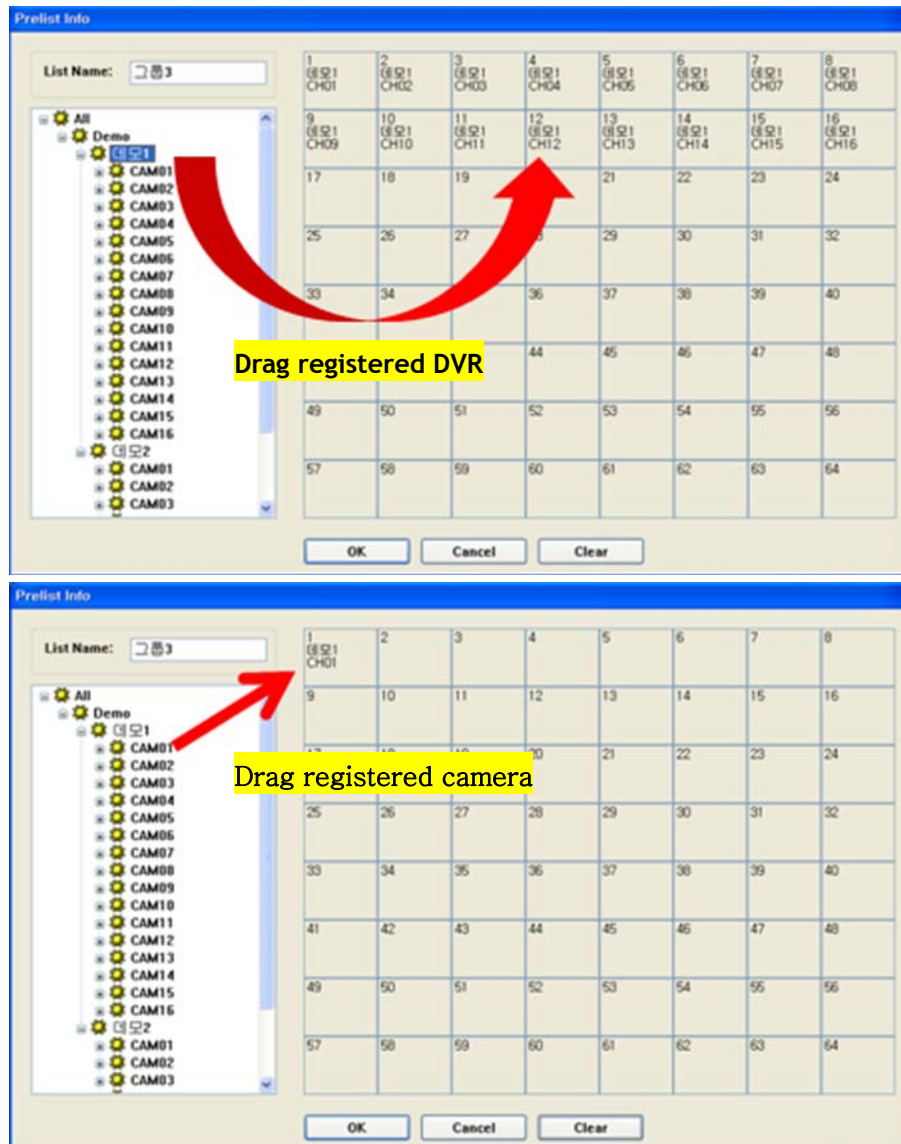
- 1) Please click "GROUP" on window.
- 2) Please select the group on the list



- 3) After selecting group, click ADD button



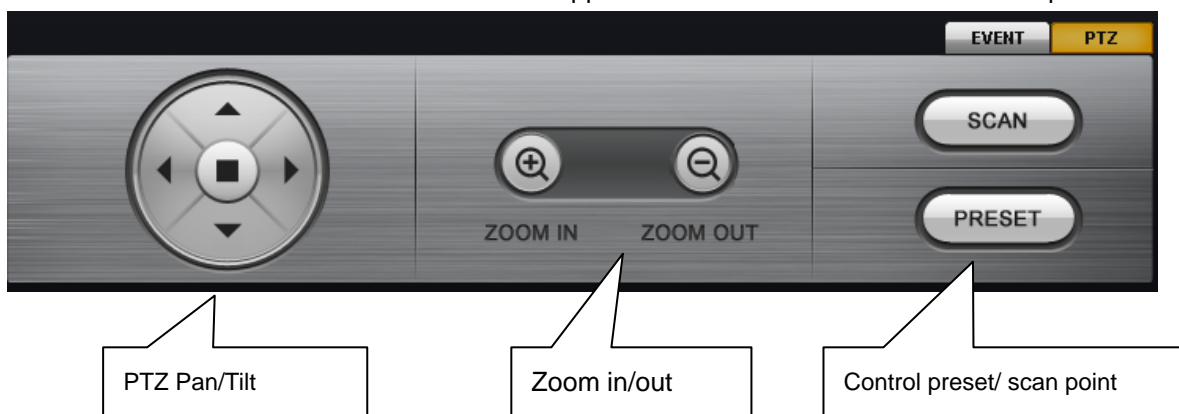
- 4) Please select registered DVR. Select DVR or cameras and drag to the right screen division.
- 5) Click OK to save the setup.



1-4-4. PTZ control

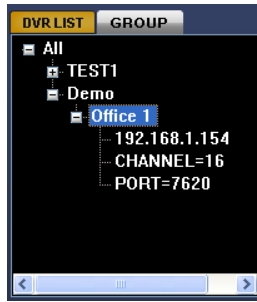
PTZ camera can be controlled in 1ch screen mode on CMS.

Click PTZ button as below. Event window disappears and PTZ control window shows up.

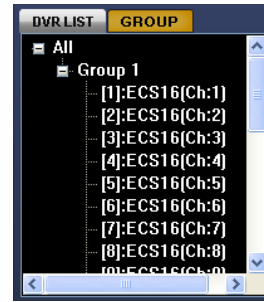


At DVR LIST : You can control PTZ after selecting the DVR of the PTZ camera.

At PRELIST : You can control PTZ after selecting the Camera.



DVRLIST




GROUP

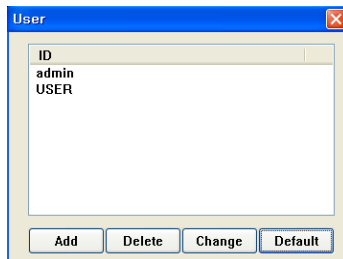
1-4-5 Event Status

If you click EVENT button, you are able to check several types of event logs.



1-4-6. CMS user setup

If you click  button, a window of user list will appear. You can manage users to access to CMS by adding, deleting or changing user.



ADD : add user

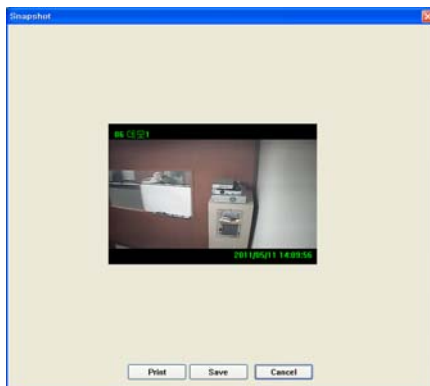
DEL : delete registered user

CHG : change user ID or Password


Default : Delete all registered users except for admin user

1-4-7. Snapshot

Select screen and click the snapshot button  to get a picture. You can save or print snapshot.

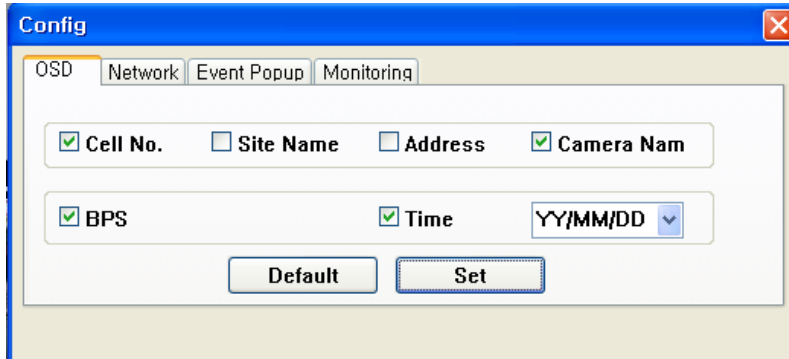


1-4-8. Config

If you click Config  button, Config window pops up as below.

1-4-8-1. OSD

You can select what you want to be shown in each channel as OSD.



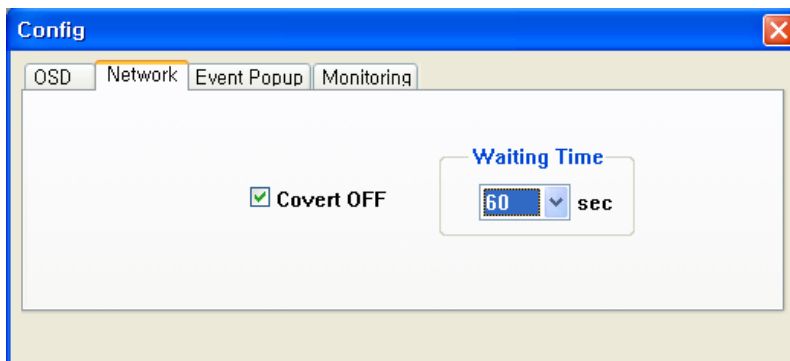
1-4-8-2. Network

1) This function indicates that video will be hidden or not in Live Display mode.

If you select 'Covert OFF', video will not be shown same as you set it in local DVR.

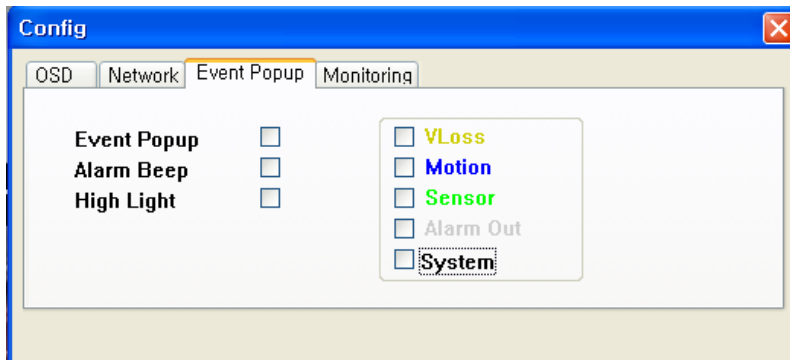
2) Waiting Time

Due to unstable network transmission, CMS might have to wait until the time you set if CMS does not receive the data from DVR. After this waiting time passes, CMS retries to get data from DVR.



1-4-8-3. Event Popup

Event notification will be worked as 'Event Popup' 'Beep Sound' and 'High Light'.



1) Event Popup

When event triggered in local DVR, Video will be showed as full screen.

(DVR should be set on EVENT Mode first)

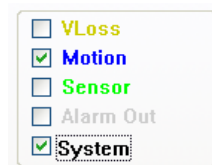


2) Alarm Beep

When Event triggered, it gives beep sound in CMS PC.

3) High Light

The channel had Event is shown with the color on the border for following events such as 'Video Loss', 'Motion Detected' and 'Sensor Activated.'



Vloss = Yellow
Motion = Blue
Sensor = Green
Alarm out = Grey
System = Black

- Alarm Out

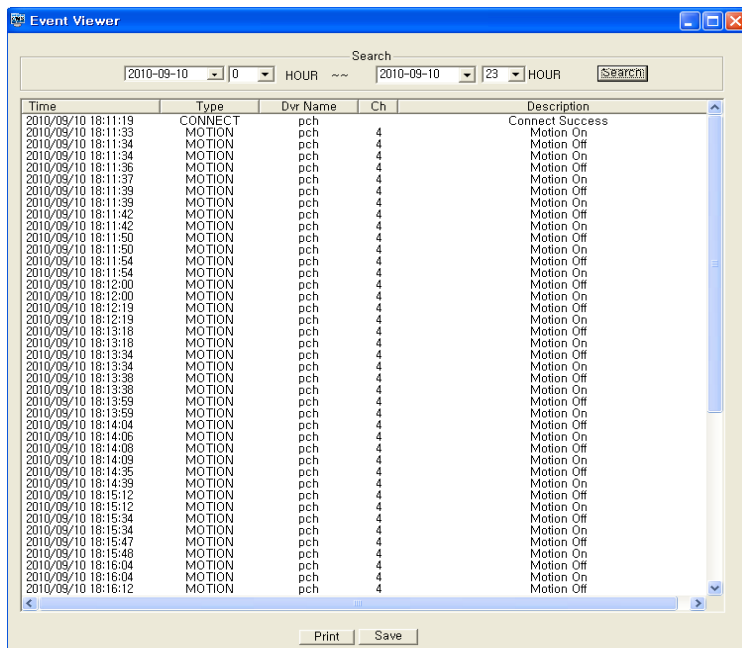
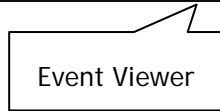
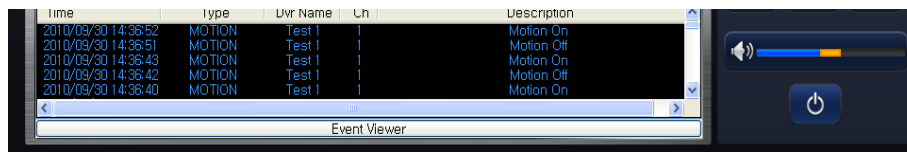
If you select Alarm out, CMS indicates it on Log window when Alarm out happens in DVR.

- System

If you select System, CMS indicates it on Log window when HDD is failed in DVR.

4) Event Viewer

If you select the Event Viewer on the bottom of window, you can see the log information.



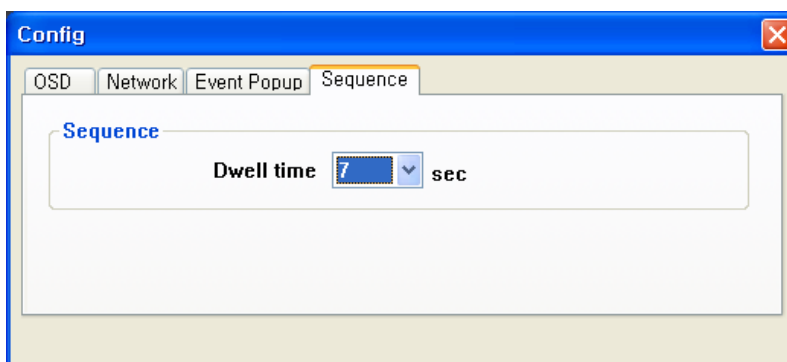
Logs on list can be saved or printed

1-4-8-4. Sequence

Monitoring Rotating is sequence of channels. You can set up rotating time per second.


On initial screen mode, select auto sequence button and sequence mode gets activated. In case of 16ch DVR, if you select 4ch screen mode, it rotates by 4 channels. (1st: ch1,2,3,4 - 2nd: ch5,6,7,8 ~) If you select 9ch screen mode, it rotates by 9 channels.

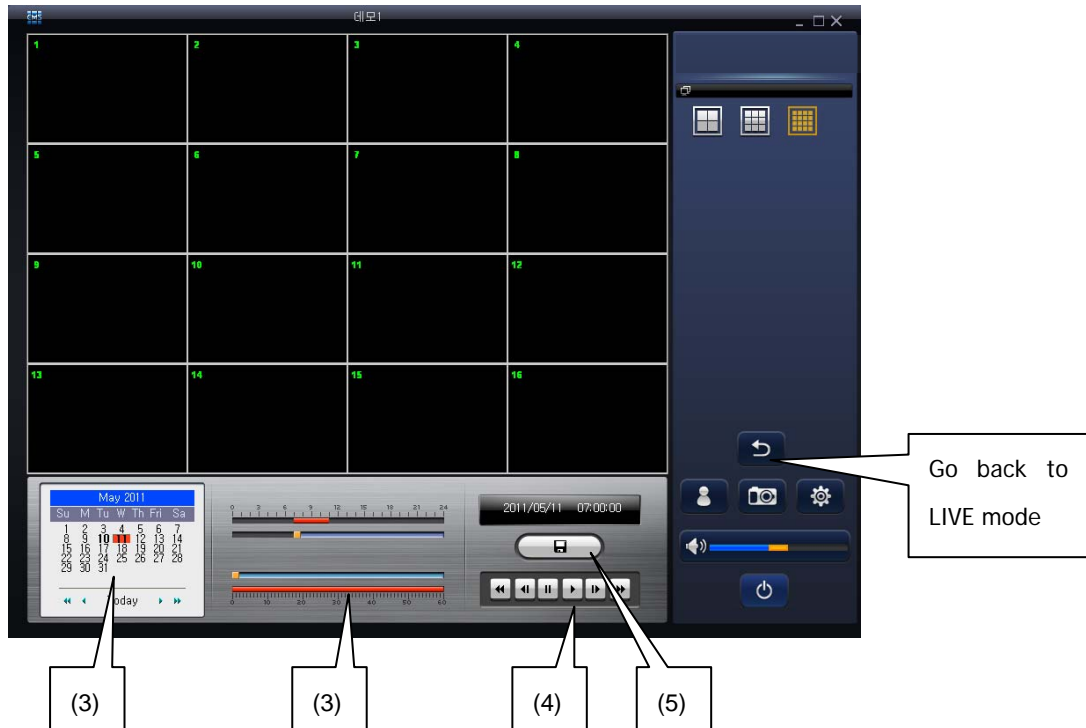
(1st: ch1,2,3,4,5,6,7,8,9 - 2nd: ch10,11,12,13,14,15,16,1,2 ~)



1-4-9. RPB (Remote Playback)

It is search function to playback recorded data of remote DVR you connect on CMS.

- (1) Select DVR site you wish in 'DVR LIST' tap of main screen of CMS.
- (2) Click **RPB** button to move to remote playback mode. (To get into RPB mode, DVR should be connected.)
- (3) Select data and time (hour/minute).
- (4) Then, click  play button to play.



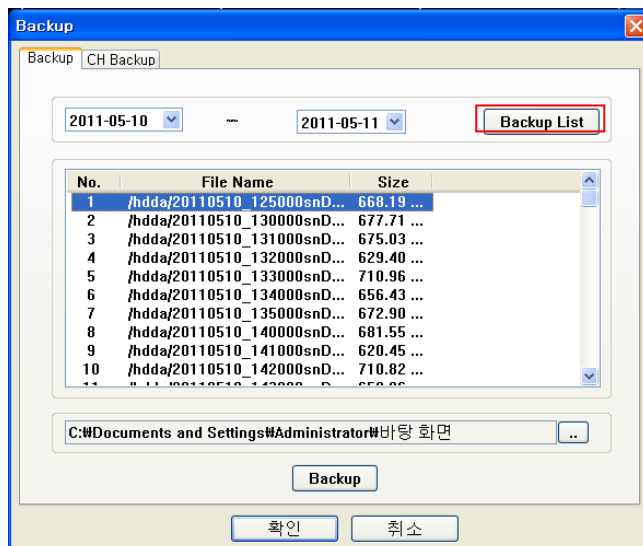
(5) Backup

- All channel backup

Click backup icon. Then select date and designate path to save backup file.

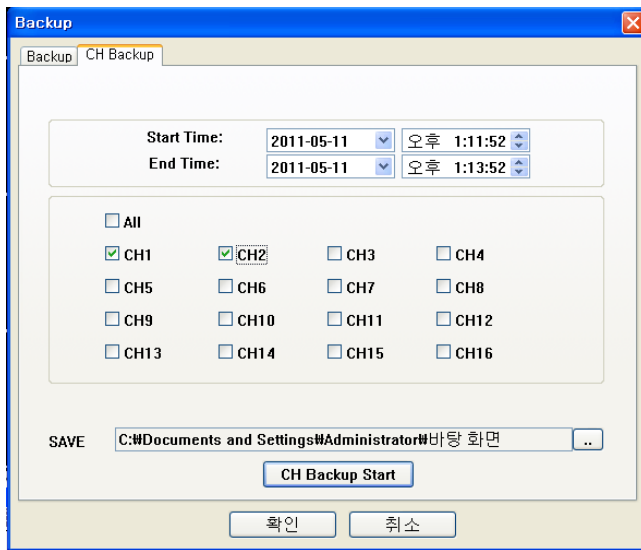
You will be able to see backup file lists by clicking Backup list button as below.

Select backup file on the list you wish to save and click Backup button.




- Backup by each channel

Input Start time and End time. Select channel no. to backup and designate path to save file.
Click CH Backup Start button to start CH backup.



1-4-10. LPB(Local Playback)

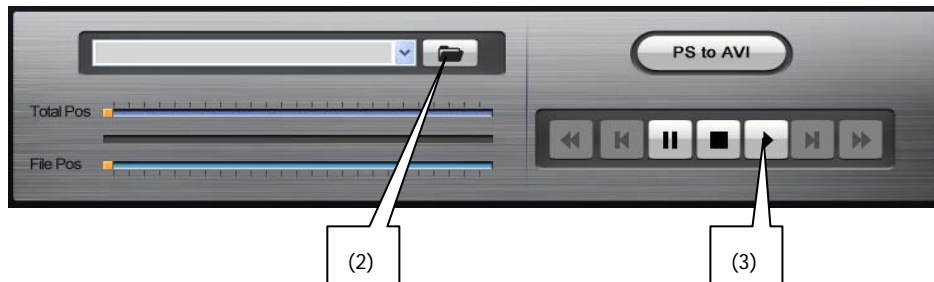
It is search function to playback recorded data in your CMS PC which you backup in RPB mode.

(1)Click  button to move to backup player mode

(2) Click  button to open backup file.

* It is possible to open over 1 file at a time but total size of files to open is limited to 10GB.

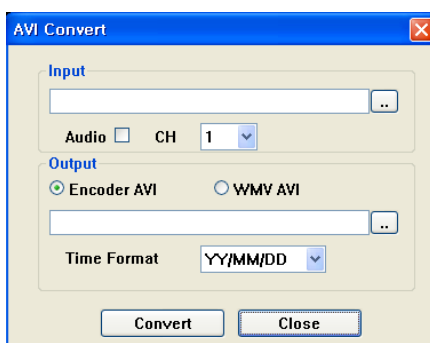
(3) Click play button to check.



1-4-10-1. Convert to AVI format

The format of backup file can be converted to AVI file per each channel.

If you click PS to AVI icon, the AVI Convert window will be shown.



Input : Select backup file to convert to AVI

If you want to convert with Audio, check in Audio box

Audio : Check and audio data will be converted as well

CH : Select channel to convert

Output : Appoint directory and file name

Encoder AVI : PS file is converted to AVI that can be displayed on media player except Windows media player.

- If converted AVI file is not displayed, please go to <http://dvr-update.com/support.html> and download FFDshow codec.

WMV AVI : PS file is converted to AVI that can be displayed on Windows media player.

(To use Windows media player, "wmv9VCMsetup.exe" should be installed in your PC first)

Time Format : Select time stamp be shown

Convert : Start AVI convert

1-4-11. Remote setup

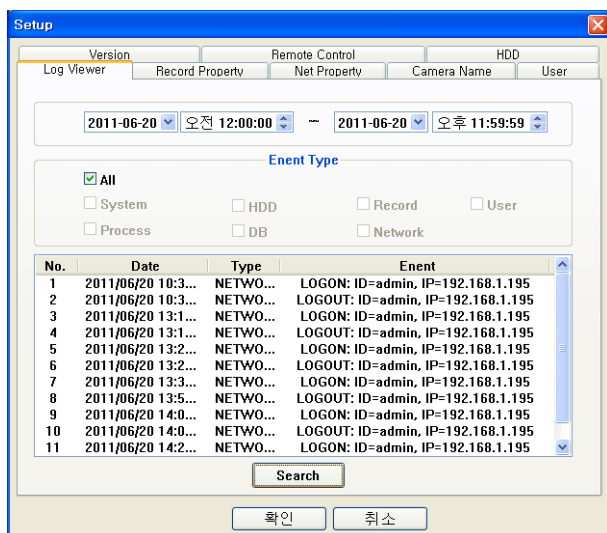
You can check or modify configuration of remote DVR on CMS.

Select DVR and click **SETUP** button to get into remote setup menu.

: LogView / Record Property / Net Property / Camera Name / Version / Remote Control / HDD

1-4-11-1. Log view

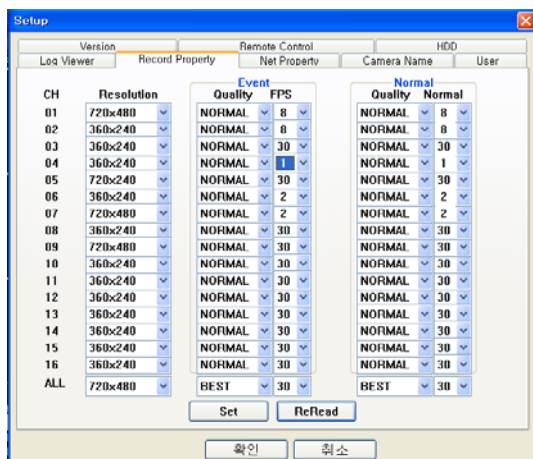
You can search event logs by time and event type.



- (1) Input time to search event logs
- (2) Select event type
- (3) Click Search button

1-4-11-2. Record Property

You can check or modify recording setup values of remote DVR



You can adjust resolution, Quality and frame rate to record by Event & Normal recording mode.

1-4-11-3. Net Property

You can check resolution/quality/fps that remote DVR send via network.

*Dual stream should be set "ON" on DVR to use this.

CH	Resolution	Quality	FPS
01	360x240	NORMAL	8
02	360x240	NORMAL	8
03	360x240	NORMAL	8
04	360x240	NORMAL	8
05	360x240	NORMAL	0
06	360x240	NORMAL	0
07	360x240	NORMAL	8
08	360x240	NORMAL	8
09	360x240	NORMAL	8
10	360x240	NORMAL	8
11	360x240	NORMAL	8
12	360x240	NORMAL	8
13	360x240	NORMAL	8
14	360x240	NORMAL	8
15	360x240	NORMAL	0
16	360x240	NORMAL	0
ALL	720x480	BEST	30

1-4-11-4. Camera Name

CH	Camera Name
01	CAM01
02	CAM02
03	CAM03
04	CAM04
05	CAM05
06	CAM06
07	CAM07
08	CAM08
09	CAM09
10	CAM10
11	CAM11
12	CAM12
13	CAM13
14	CAM14
15	CAM15
16	CAM16

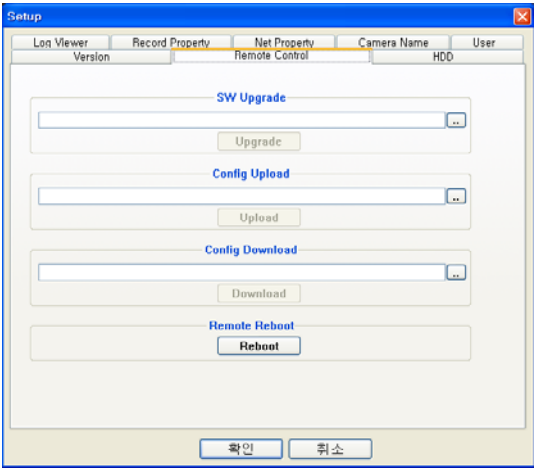
You can modify camera name as you wish.

1-4-11-5. Version

Hardware	Firmware
Model: CS1648	UI: 5.22.1
Frames: 480 CIF	DB: 2.13.0
V-CH: 16	Record: 1.6.6
A-CH: 1	Player: 1.7.12
Sensor: 1	Network: 1.12.7
Alarm: 1	Version: v3_9_2-1105271

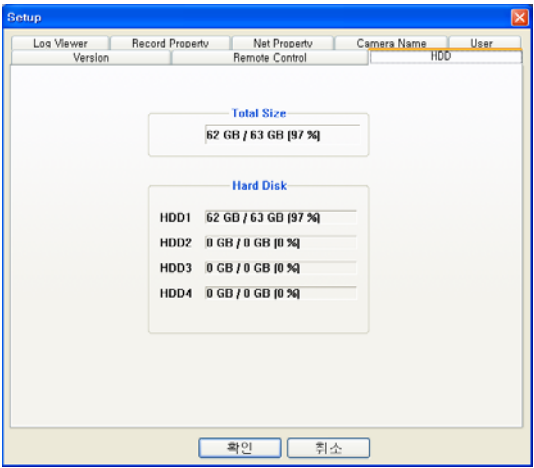
You can check DVR hardware information and firmware version.

1-4-11-5. Remote control



- SW upgrade** : F/W upgrade of remote DVR via CMS
- Config Upload** : You can change config data to DVR
- Config Download** : You can get config data from DVR
- Remote Reboot** : You can reboot remote DVR

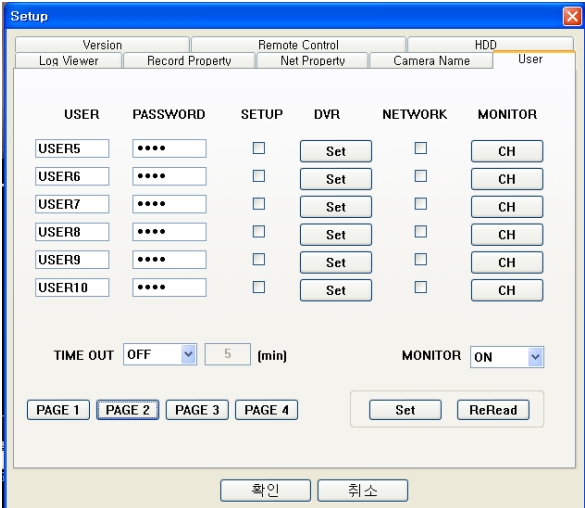
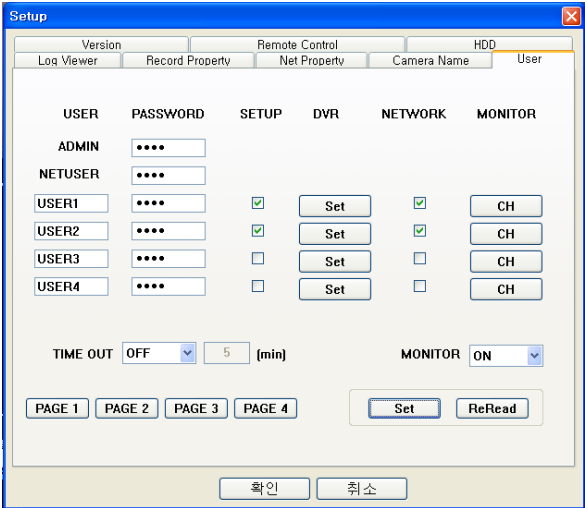
1-4-11-6. HDD



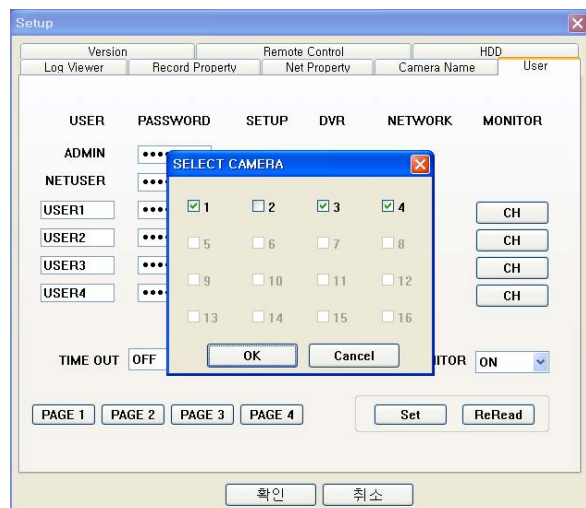
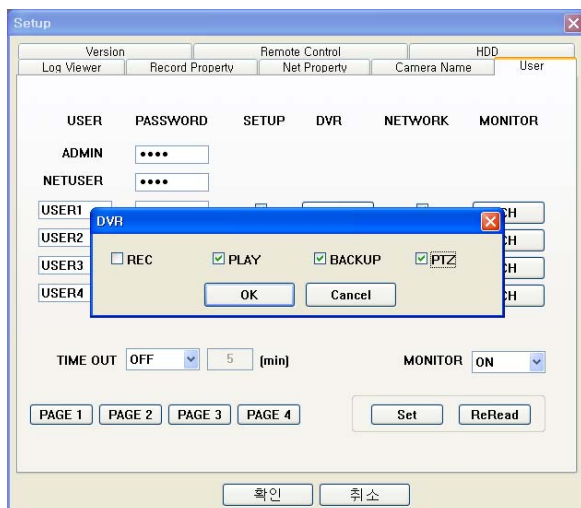
- You can check the number of HDD and HDD capacity installed in DVR

1-4-11-7. User

Remote DVR user setup : You can set up user access authority on CMS as well as on DVR.



- **USER** - There are 2 unchangeable user IDs (ADMIN, NETUSER), and additionally you can add 20 additional USERS by your own.
- **PASSWORD** - Initial password for each user is set to '0000'. When you create a new account, make sure that you have to enter new PASSWORD. And don't forget the Password.
- **SETUP** - Check this box then the user is authorized to go into setup menu
- **DVR** - Click SET button then DVR setup detail will pop up. You can give authorities of REC, PLAY(SEARCH), BACKUP and PTZ to each user as you wish.
- **NETWORK** - Check this box then the user is authorized to access to DVR via network (Web, CMS)
- **TIME OUT** - When this is set to ON, LOGIN window will re-appear after entered time from any signal input. If you want to log out, you need to go to MENU and select LOG OUT like right picture.
- **MONITOR** - First select ON to give monitoring authority to each user. Then click CH button to Select monitoring channel the user can access.
- **PAGE** - Move to next page in order to create or configure more users.



- Central Monitoring System Software-