

CDVS-7000 Series

Internet Browser

Remote Software

Guide



Web Surveillance Program

The web surveillance program offers the following functions when connecting with a CDVS-7000 series DVR using an internet browser:

- Real time image surveillance
- Real time audio
- Image search by date and time
- PTZ control
- Real time sensor event notification

Note

To use Web surveillance function, “Use Network” and “Use Web” must be checked in network window of DVR environment setting screen.

Web connection protocol is TCP/IP and port number is 80

If port number is changed from the default port 80, then the port number must be added after the address in the web browser address window. Example: <http://192.168.1.25:7300/>

Web connection, Static Ip on DVR

A static IP is an IP address that never changes. To connect to a static IP enter the IP address in the web browser address window. An example IP would be *65.85.107.120*.

Web Connection, Dynamic IP on DVR

A dynamic IP address is one that changes frequently. If you use a dynamic, DVR should be connected with external DDNS. Enter the DDNS domain in the internet browser address window. An example of this type of address is *Crest.dyndu.net*.

Note

Refer to Appendix of DVR User Guide for information on connecting DVR with external DDNS.

Connection

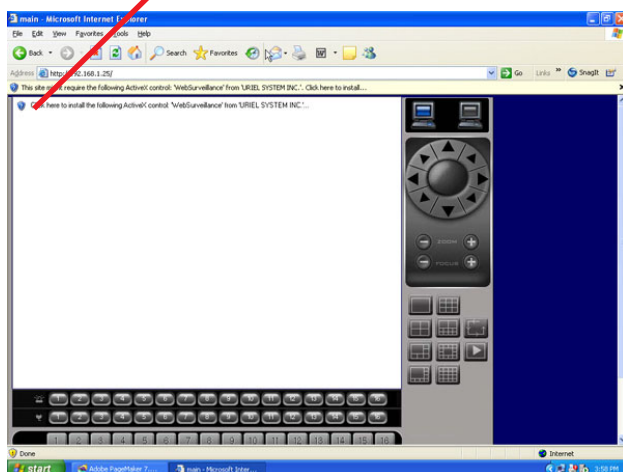
To connect, enter IP or DDNS domain of DVR in address window of web browser. The first time the connection is made, program will be automatically downloaded. You will receive the message below. Check “Always trust content from Uriel Systems Inc.” and click “yes”.

Authentication Download



Note | Windows Xp SP2 users are asked to install Active X as shown in the image below.

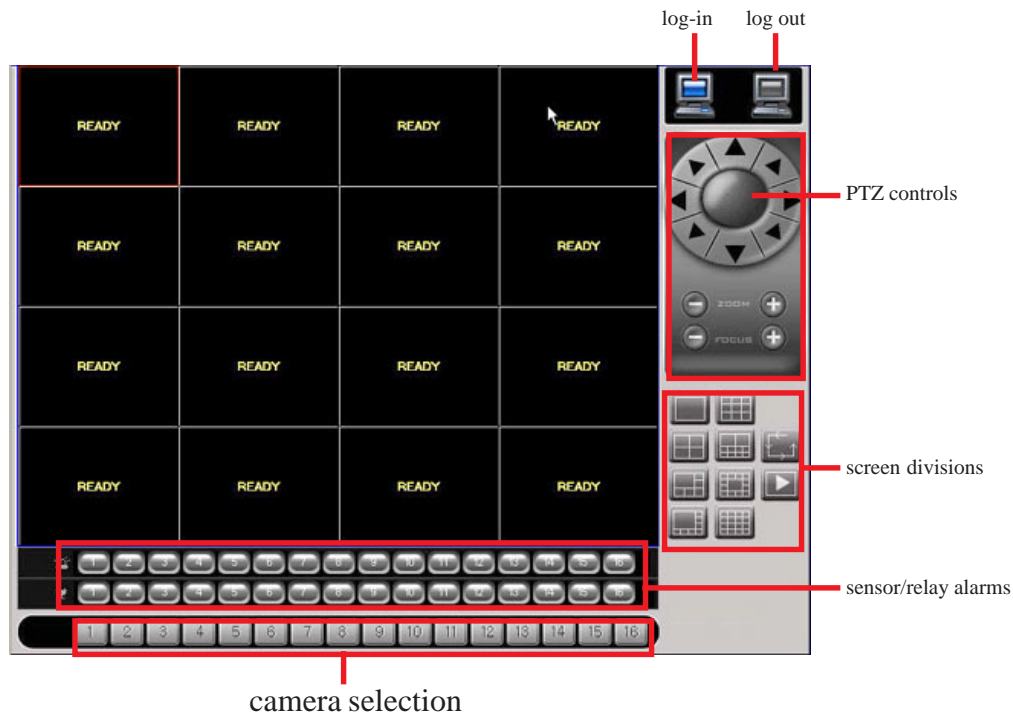
click to install ActiveX



Install activeX controls

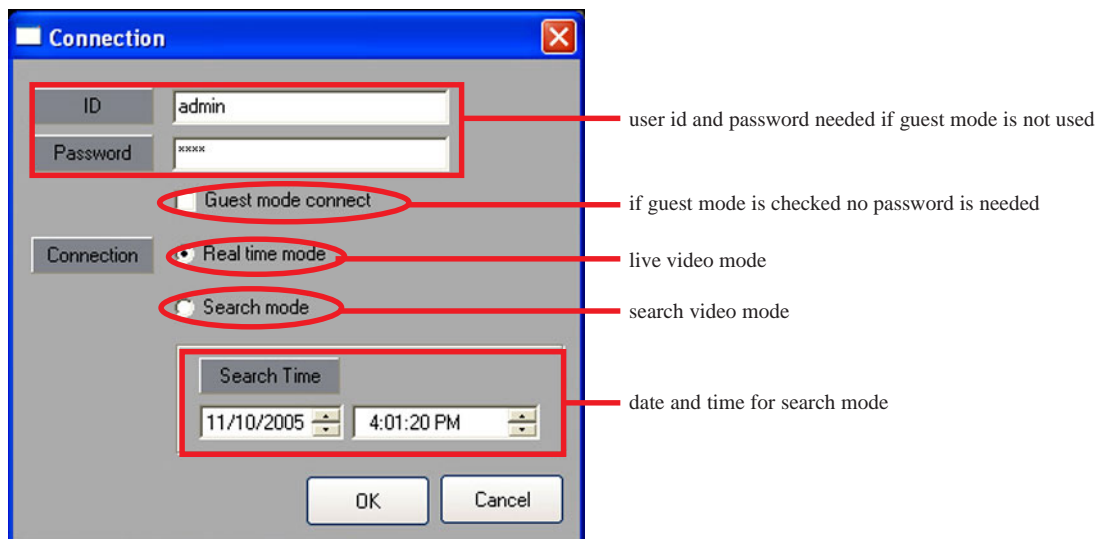
Surveillance Operation

After installing the web browser controls, the Surveillance screen appears. The image below shows the different functions of the surveillance screen.



Log-in

Click the log-in icon and the log-in window appears. There are two options for logging in: Guest, which does not require a user id or password (**must have anonymous user checked in DVR system settings or guest will not connect**) or connection, which requires a user id and password. To view live video from DVR, select Real time mode from the log-in window. To view recorded video, select Search mode and enter date and time to begin playback. See image below.

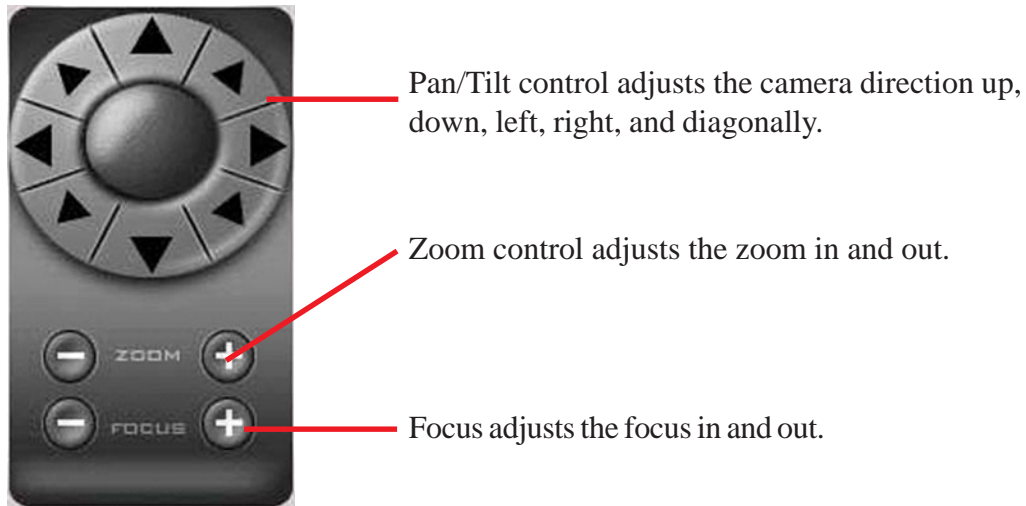


Log Out

Clicking the log out icon ends the connection.

PTZ Controls

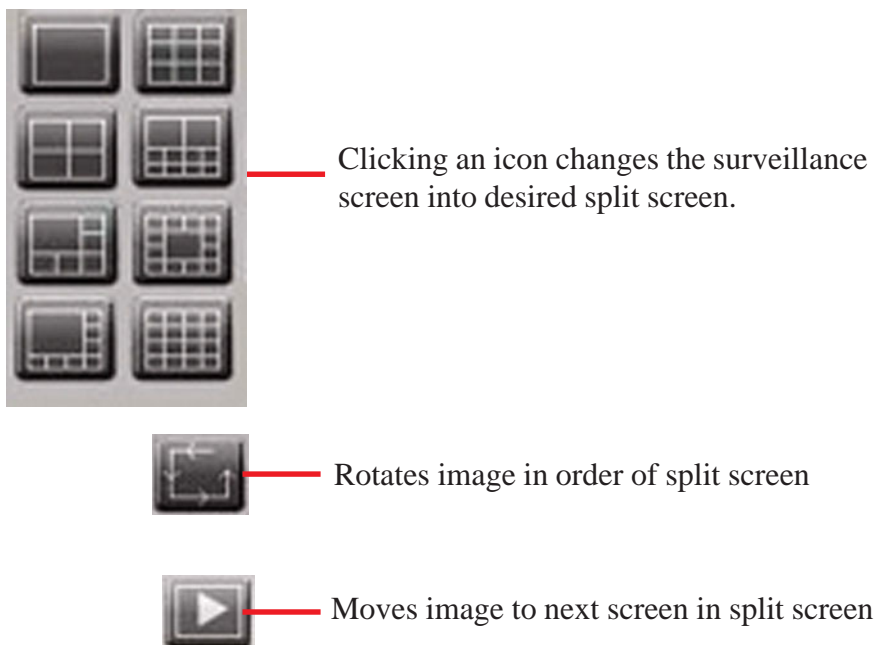
PTZ function allows for limited control of PTZ camera. The image belows shows the PTZ functions.



Note

PTZ camera must be installed and set up in DVR before PTZ is functional

Split Screen



Sensor/Relay Alarms

Sensor/Relay displays real time alarm events. Sensor alarms display in Red. Relay controls display in blue when activated.



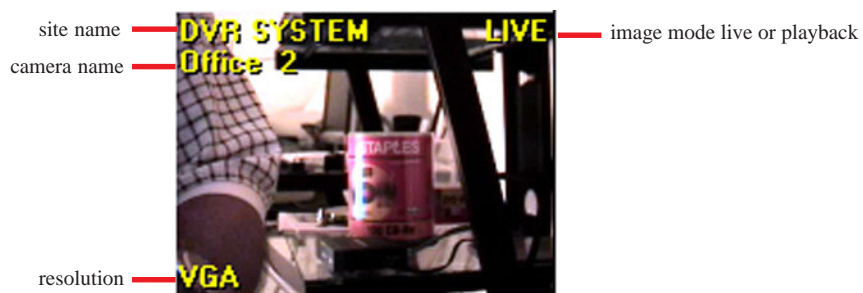
Camera Selection Control

Used when in single camera display mode to select camera to display.



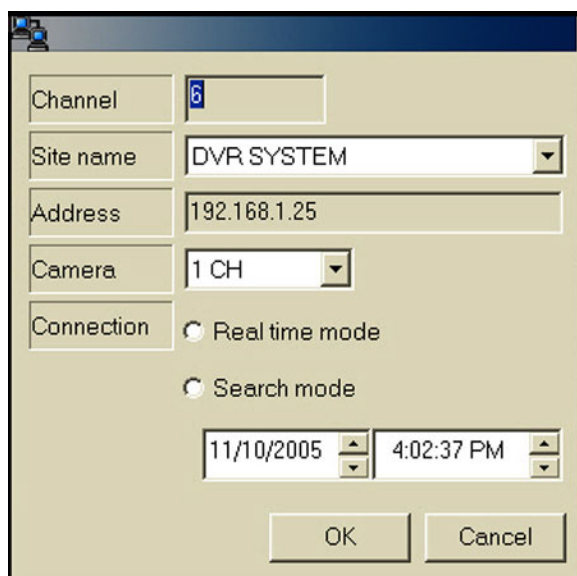
Surveillance Image

When the image is the selected image, the boundary will be red.



Connect Channel

Individual cameras can be searched by right clicking in the camera area. The popup menu appears as shown below. Camera can be viewed in either live or playback mode. Up to 16 live or playback channels can be selected in combination with different sites.



Select the camera and viewing mode (live or playback). If playback is selected, then set date and time for playback. Click OK.

Note

If playback is selected and image is not displayed after search has started, it is possible that the image has been overwritten or there is no recorded video for selected date.