
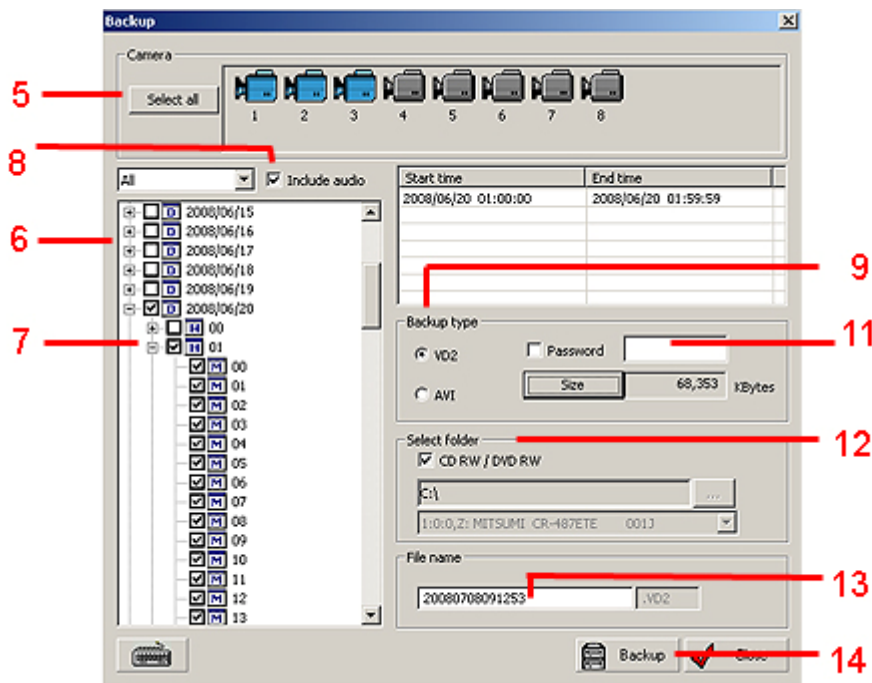


7000 S2 Quick Backup Guide

1. Place CD-R (or DVD-R if DVR is equipped with DVD drive) into drive and allow 5-10 seconds to pass so DVR can recognize that the backup media has been inserted. This also applies with USB drives.
2. Click on the padlock upper right side of main screen and log in (user must have rights to make a backup)
3. Click on SEARCH on the right side
4. In search click on the BACKUP button. 
5. In the backup dialog box select all cameras or just the ones you need to backup
6. On the lower left side you will see the dates associated with the camera(s) selected shown in the time navigation structure. By clicking on the plus (+) sign next to the date this will expand the day down to the hour(s), by clicking on the plus (+) next to the hour(s) will expand down to the minutes.
7. Place a check mark in the empty box next to the time you desire to backup. Please keep in mind that if you do not expand the tree and select only the day, all data for that day will be backed up; if you just select the hour all minutes in that hour will be backed up.
8. Place a checkmark in the box for audio if it is used on any camera that is to be backed up.
9. Next select type of backup you wish to make. VD2 or AVI. To help make the decision on what type of backup to make, VD2 is the DVR's proprietary format and can not be modified (this would also contain the watermarking). AVI does not have watermarking and could be modified by someone (Recommended is VD2).
10. Select VD2 then click on Size (Size will not be available for AVI).
11. If a check mark is placed in password and a password is used, the person that is going to view the vd2 file must also have the password; if it is forgotten there is no way of recovering the data from the produced backup. (This feature is not available for AVI backups)
12. Make sure there is a checkmark in CD-RW/DVD-RW box if backing up to a CD, if you are going to back up to a USB device uncheck this box and use the browse button to locate the device. **DO NOT BACKUP TO C:**
13. You may change the file name if desired but it is not necessary
14. Click on Backup
15. You will be prompted to save the DVR player program if you are making a VD2 file (choose yes).
16. As the backup is being made you can watch the progress in the message box, once done you will get a message in the box stating completed and cancel will disappear and OK will be available to click. Click OK.
17. Click on exit to return to the main screen.
18. Once backup is done; you should take the media to a PC to check the backup.



NOTE: 1,024kB = 1MB 1,048,576kB = 1GB
 CD-R or CD-RW holds on average = 716,800kB (700MB)
 DVD-R or DVD-RW holds on average = 4,928,307kB (4.7GB)