



# **Network Video Recorder Quick Installation Guide**

## **DS-2100 Pro+ Series**

**DS-2105/2109/2112/2116/2120/2125/2132/**

**2136/2142/2149/2156/2164 Pro+**

**Quality Service Group**

**1.0.0.6**

Information in this document is subject to change without notice.

© Copyright 2014, DIGIEVER Corporation. All rights reserved.

## Quick Installation Guide

Thank you for choosing DIGIEVER Network Video Recorder. The following quick guide will lead you to complete the installation and configuration of the NVR. Please read the following description carefully.

### ❶ Pre-installation Notice

Please make sure the following items are prepared for installing DIGIEVER NVR DS-2100 Pro+ Series.

- Network connection
- Configuration of network cameras
- Compatibility of network cameras
- Computer for configuring NVR
- 1-2 hard disks
- Compatibility of hard disk with NVR
- 1 Philips screwdriver
- \*For camera compatibility, please check our website  
<http://www.digiever.com/support/compatibility.php>

### ❷ Remote PC System Requirements

The following are minimum system requirements for a personal computer to operate the NVR in better performance:

- **Operating System**  
Microsoft® Windows® Vista/ 7/8 (32 and 64-bit)
- **Browsers (32-bit) in Windows OS**  
Microsoft® Internet Explorer 8.0 or above, Chrome 31.0.1650.57m or above, Firefox 25 or above, Opera 17.0 or above, Safari5.1.7 or above
- **CPU**  
For channels under 16 : Intel® Dual core CPU 3.0 GHz or above  
For channels over 16: Intel® i5/i7 CPU 3.3 GHz or above
- **Network**  
Minimum 10/100 Ethernet (Gigabit Ethernet is recommended)

 **Note:** User is suggested to connect cameras and NVR with Gigabit switch.


- **Memory**

For channels under 16 : DDR3 4G or above

For channels over 16: IDDR3 8G or above

- **Graphics Adapter**

AGP or PCI-Express, minimum 1024×768, 16 bit colors, 1G memory or above

 **Note:** It is highly recommended to use a graphics adaptor which provides higher than resolutions 1024 x 768 in order to experience the full benefits of the software.

- Make sure the display DPI setting is set to default at 96DPI
- To set DPI value, right-click on desktop, choose “**Settings**” tab >> “**Advanced**” >> “**General**.”

- **CD-ROM Drive**

It is necessary to read the operating instructions in the provided CD-ROM.

- **Adobe Reader**

It is necessary to read the operating instructions in the provided CD-ROM.

The audio function will not work if a sound card is not installed in the PC.

Audio may be interrupted depending on network traffic.



## ③ Package Contents

① NVR Network Video Recorder



② Power Cord



③ Power adaptor



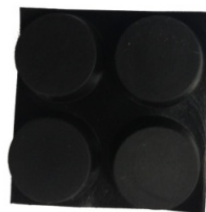
④ Screw Bag



⑤ 2.5" HDD Bracket



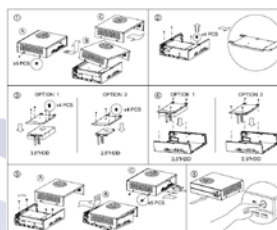
⑥ Stand



⑦ Ethernet Cable



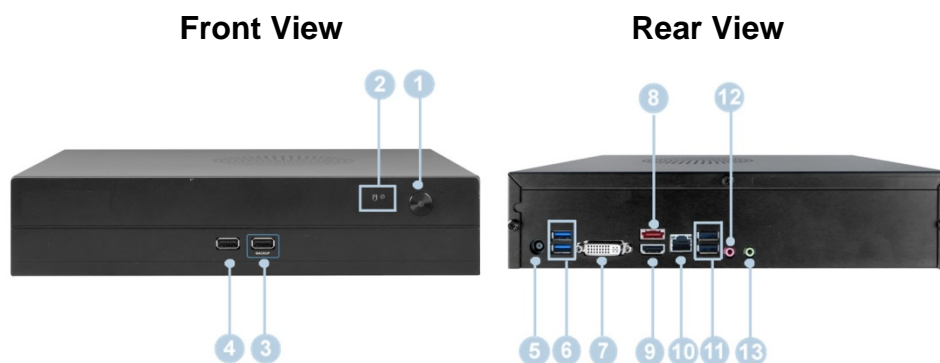
⑧ Assembly drawing



⑨ Product CD



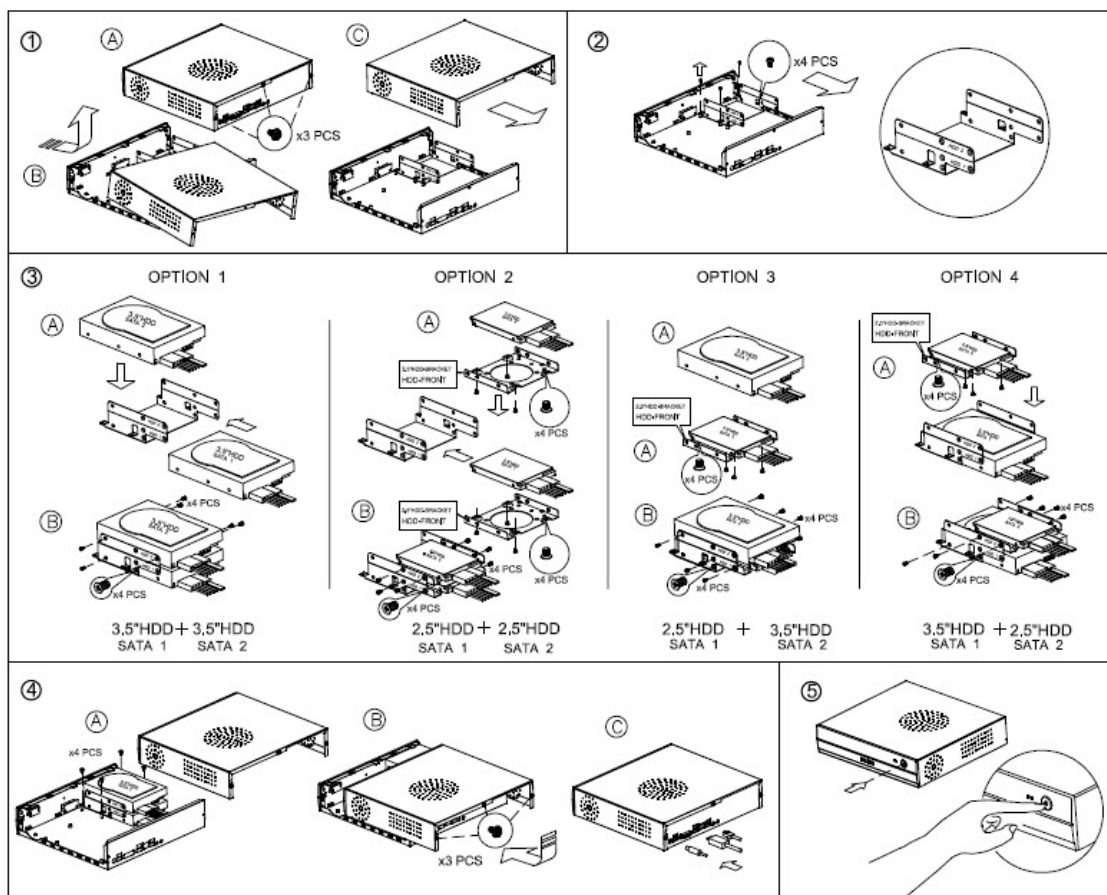
## ④ Hardware Description



1. Power button
2. LED indicators: HDD
3. USB 2.0 x1 (Support auto video backup)
4. USB 2.0 x1
5. Power connector
6. USB 3.0 x 2
7. DVI-I
8. eSATA x 1
9. HDMI x 1
10. Gigabit LAN
11. USB 2.0 x 2
12. Audio mic input
13. Audio output

## ③ Hard Disk Installation

Please follow the steps as illustrated below to install the hardware:



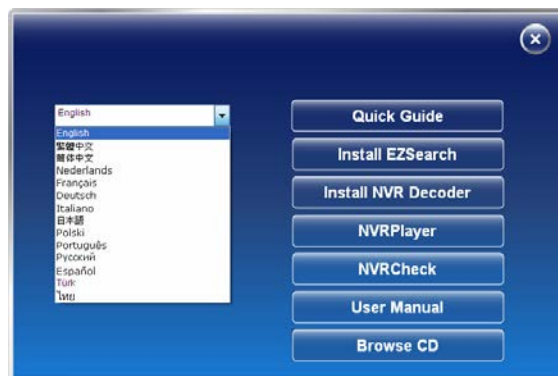
## ⑥ Connection to DIGIEVER NVR

Please insert the product CD-ROM on a PC to install EZ Search and S-NVR Decoder. Finally, you can start Quick Configuration on a web page.

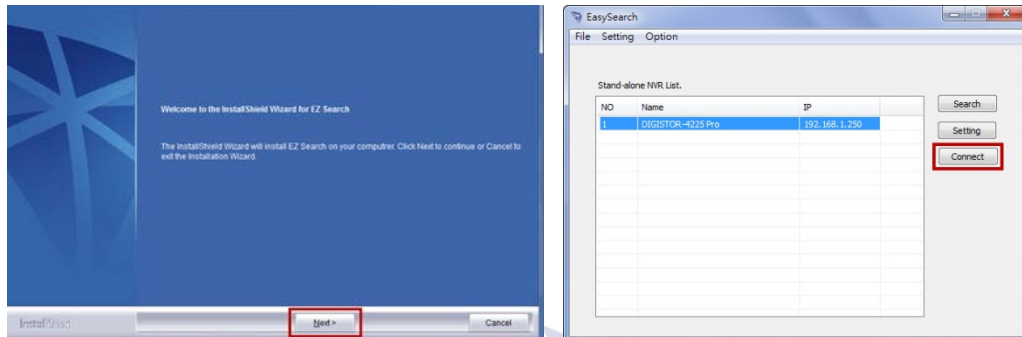
- Install EZ Search for finding NVR in the network.
- Install S-NVR Decoder.
- Connect to the configured NVR and install the ActiveX control.

### ① Install EZ Search

Please execute the product CD and click “Install EZ Search.”

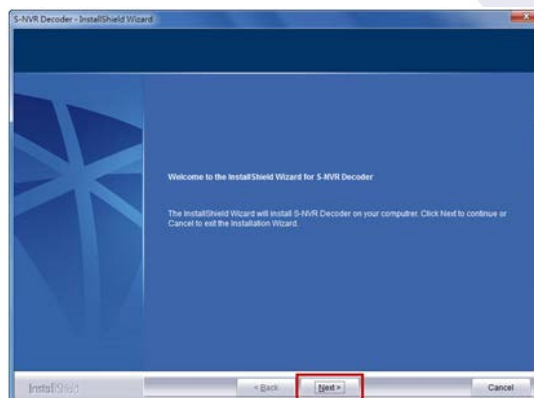


Follow the instructions to install and the EZ Search will run automatically.



### ② Install S-NVR Decoder

Click “Install S-NVR Decoder” and follow the instructions to setup.



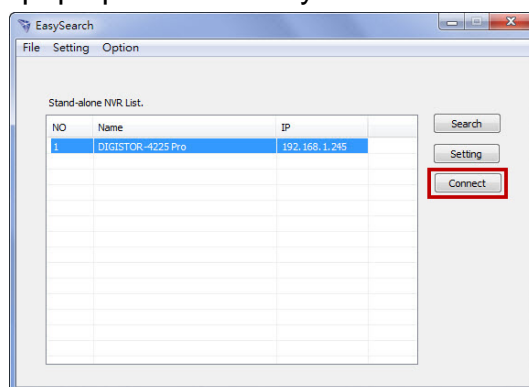
## ③ Connect to NVR

### 1. Connect to NVR

After setting the EZ Search and S-NVR Decoder, the user can connect to the monitoring page by the following two options:

#### 1) EZ Search

Once you click “**Connect**” or double click the selected NVR list, the IE browser will pop up automatically.



#### 2) IE browser

Log in to the system by entering its IP address in IE browser.



**Note: There are 2 methods to set network:**

- **Obtain an IP address automatically (NVR Default)**  
Obtain an available dynamic IP address assigned by a DHCP server. If this option is selected, NVR will automatically obtain an available dynamic IP address from the DHCP server once it connects to the network.
- **Specify an IP address**  
If there is no DHCP server existing in network environments, the static IP address will be given as **192.168.1.245**. It should be adaptable in most networking environment, and user can choose to maintain the default IP address or change it in this page. However, it's recommended setting different IP address of NVR if there is more than one NVR in the same LAN.



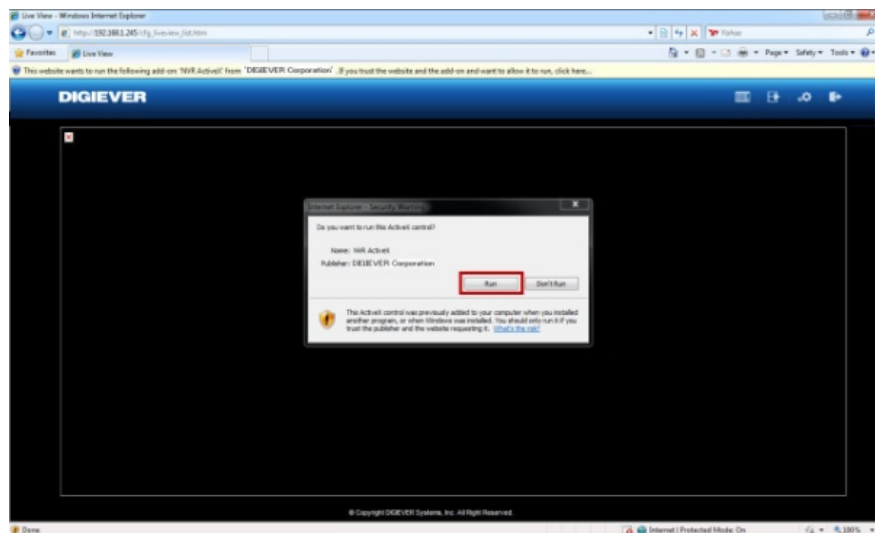
## 2. Enter a user name and password

Log in the NVR with the default adminster account (user name: admin, password: admin).



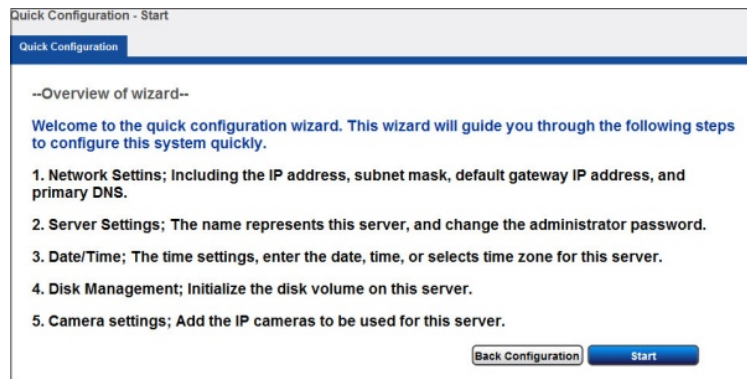
A blue login dialog box with a white border. It contains two text input fields: "User Name" and "Password". Below the "Password" field is a checkbox labeled "Remember Username and Password". At the bottom are two buttons: "Log in" and "Cancel".

## 3. Install the ActiveX control in order to successfully view the interface of NVR from IE browser



## ⑦ Quick configuration

After you install the ActiveX control, the system will direct you to set Quick Configuration in 5 steps. Follow the instructions of the Overview of wizard to complete the system setup.



Quick Configuration - Start

Quick Configuration

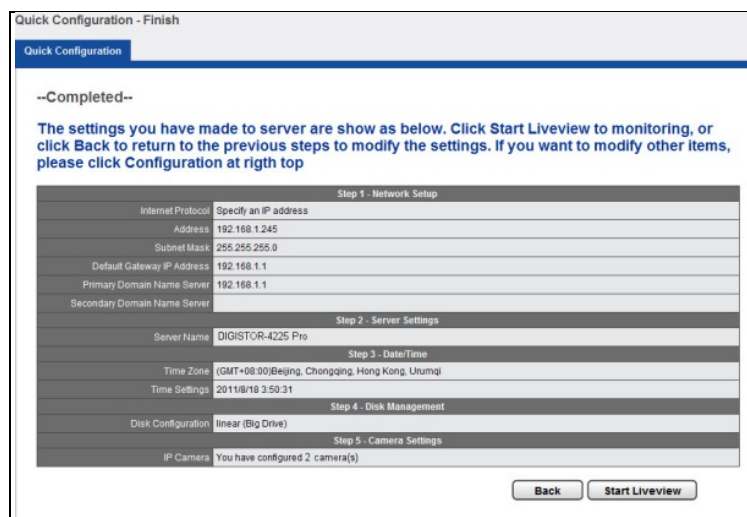
--Overview of wizard--

Welcome to the quick configuration wizard. This wizard will guide you through the following steps to configure this system quickly.

1. Network Settings; Including the IP address, subnet mask, default gateway IP address, and primary DNS.
2. Server Settings; The name represents this server, and change the administrator password.
3. Date/Time; The time settings, enter the date, time, or selects time zone for this server.
4. Disk Management; Initialize the disk volume on this server.
5. Camera settings; Add the IP cameras to be used for this server.

Back Configuration Start

Once the five steps of Quick Configuration are complete, you can click **“Start Liveview”** to start monitoring.



Quick Configuration - Finish

Quick Configuration

--Completed--

The settings you have made to server are show as below. Click Start Liveview to monitoring, or click Back to return to the previous steps to modify the settings. If you want to modify other items, please click Configuration at righ top

Step 1 - Network Setup	
Internet Protocol	Specify an IP address
Address	192.168.1.245
Subnet Mask	255.255.255.0
Default Gateway IP Address	192.168.1.1
Primary Domain Name Server	192.168.1.1
Secondary Domain Name Server	

Step 2 - Server Settings	
Server Name	DIGISTOR-4225 Pro

Step 3 - Date/Time	
Time Zone	(GMT+08:00)Beijing, Chongqing, Hong Kong, Urumqi
Time Settings	2011/8/18 3:59:31

Step 4 - Disk Management	
Disk Configuration	linear (Big Drive)

Step 5 - Camera Settings	
IP Camera	You have configured 2 camera(s)

Back Start Liveview

For further details of Quick Configuration, please refer to the user manual. When the live view is displayed, you have successfully installed the NVR. Congratulations!